



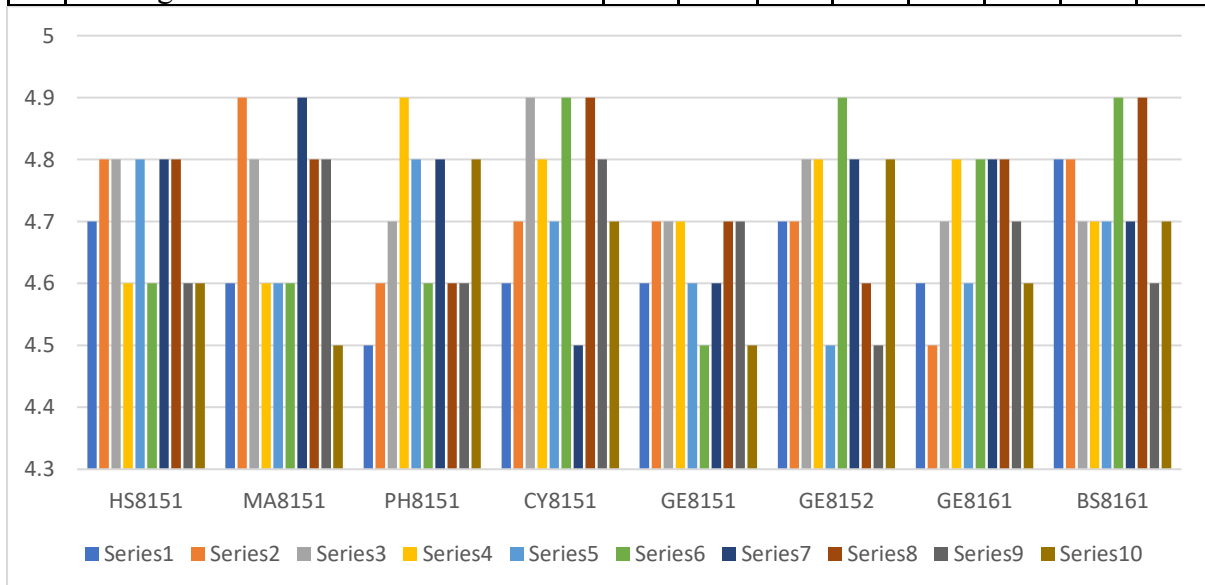
AALIM MUHAMMED SALEGH COLLEGE OF ENGINEERING



Approved by All India Council for Technical Education, New Delhi
 Affiliated to Anna University, Chennai
 NAAC Accredited Institution & NBA Accredited Courses (Mech. Engg., ECE, CSE, IT)
 "Nizara Educational Campus" Muthapudupet, Avadi-IAF, Chennai - 55.

STUDENTS FEEDBACK (ACADEMIC YEAR 2020-2021): SEM 1

S. No	PARAMETERS	Subject Code							
		HS 81 51	M A8 151	PH 81 51	CY 81 51	GE 81 51	GE 81 52	GE 81 61	BS 81 61
1	Comes to the class on time	4.7	4.6	4.5	4.6	4.6	4.7	4.6	4.8
2	Comes Well Prepared for the class	4.8	4.9	4.6	4.7	4.7	4.7	4.5	4.8
3	Engages class regularly and maintains the discipline	4.8	4.8	4.7	4.9	4.7	4.8	4.7	4.7
4	Speak clearly and audibly, writes and draws legibly	4.6	4.6	4.9	4.8	4.7	4.8	4.8	4.7
5	Covers all the topics on time	4.8	4.6	4.8	4.7	4.6	4.5	4.6	4.7
6	Offers timely assistance and counseling to the students	4.6	4.6	4.6	4.9	4.5	4.9	4.8	4.9
7	Asks questions to promote interaction and reflective thinking	4.8	4.9	4.8	4.5	4.6	4.8	4.8	4.7
8	Explain clearly and effectively the concepts / principles with appropriate Examples	4.8	4.8	4.6	4.9	4.7	4.6	4.8	4.9
9	Encourages, compliments and praises the originality and creativity displayed by the students.	4.6	4.8	4.6	4.8	4.7	4.5	4.7	4.6
10	Is understanding and unbiased in dealing with the students	4.6	4.5	4.8	4.7	4.5	4.8	4.6	4.7



PRINCIPAL
 AALIM MUHAMMED SALEGH
 COLLEGE OF ENGINEERING



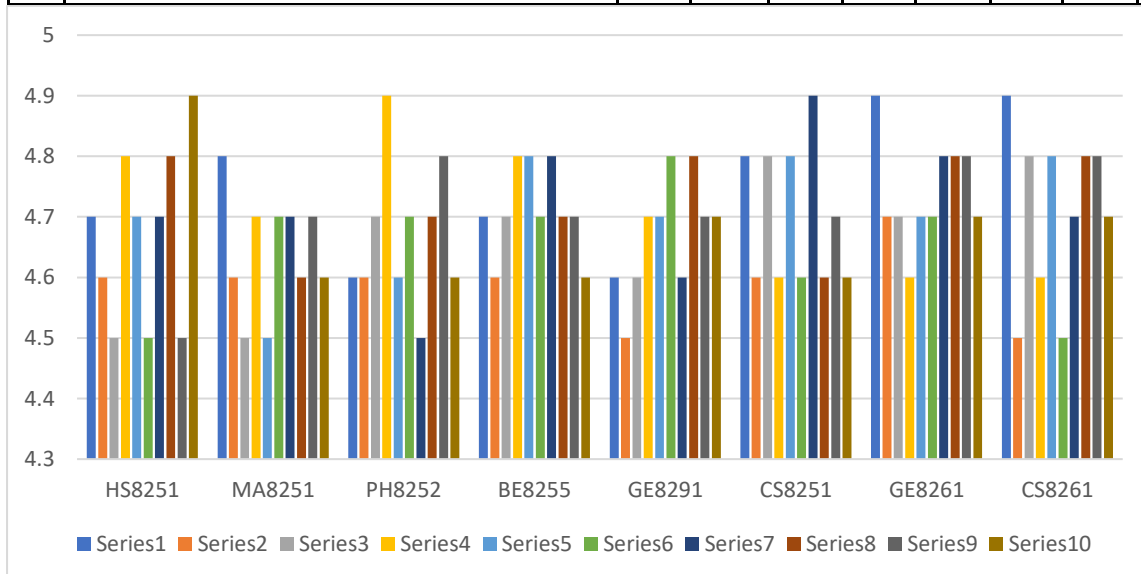
AALIM MUHAMMED SALEGH COLLEGE OF ENGINEERING



Approved by All India Council for Technical Education, New Delhi
 Affiliated to Anna University, Chennai
 NAAC Accredited Institution & NBA Accredited Courses (Mech. Engg., ECE, CSE, IT)
 "Nizara Educational Campus" Muthapudupet, Avadi-IAF, Chennai - 55.

STUDENTS FEEDBACK (ACADEMIC YEAR 2020-2021): SEM 2

S. No	PARAMETERS	Subject Code							
		HS 82 51	M A8 251	PH 82 52	BE 82 55	G E8 29 1	CS 82 51	G E8 26 1	CS 82 61
1	Comes to the class on time	4.7	4.8	4.6	4.7	4.6	4.8	4.9	4.9
2	Comes Well Prepared for the class	4.6	4.6	4.6	4.6	4.5	4.6	4.7	4.5
3	Engages class regularly and maintains the discipline	4.5	4.5	4.7	4.7	4.6	4.8	4.7	4.8
4	Speak clearly and audibly, writes and draws legibly	4.8	4.7	4.9	4.8	4.7	4.6	4.6	4.6
5	Covers all the topics on time	4.7	4.5	4.6	4.8	4.7	4.8	4.7	4.8
6	Offers timely assistance and counseling to the students	4.5	4.7	4.7	4.7	4.8	4.6	4.7	4.5
7	Asks questions to promote interaction and reflective thinking	4.7	4.7	4.5	4.8	4.6	4.9	4.8	4.7
8	Explain clearly and effectively the concepts / principles with appropriate Examples	4.8	4.6	4.7	4.7	4.8	4.6	4.8	4.8
9	Encourages, compliments and praises the originality and creativity displayed by the students.	4.5	4.7	4.8	4.7	4.7	4.7	4.8	4.8
10	Is understanding and unbiased in dealing with the students	4.9	4.6	4.6	4.6	4.7	4.6	4.7	4.7



PRINCIPAL
AALIM MUHAMMED SALEGH
COLLEGE OF ENGINEERING



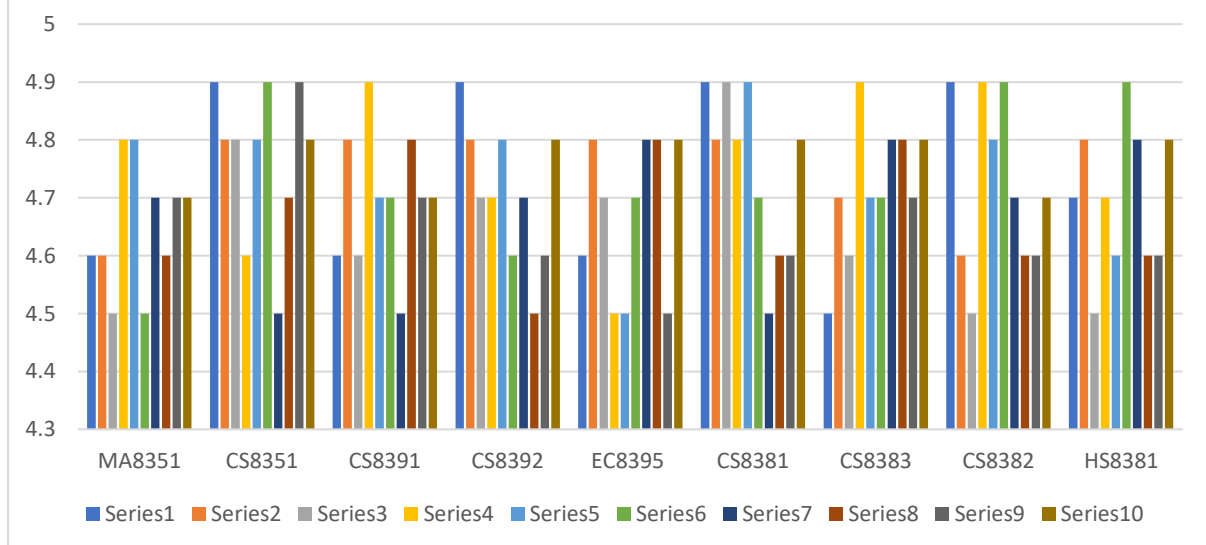
AALIM MUHAMMED SALEGH COLLEGE OF ENGINEERING



Approved by All India Council for Technical Education, New Delhi
 Affiliated to Anna University, Chennai
 NAAC Accredited Institution & NBA Accredited Courses (Mech. Engg., ECE, CSE, IT)
 "Nizara Educational Campus" Muthapudupet, Avadi-IAF, Chennai - 55.

STUDENTS FEEDBACK (ACADEMIC YEAR 2021-2022) : SEM 3

S · N o	PARAMETERS	Subject Code								
		M A8 35 1	CS 83 51	CS 83 91	CS 83 92	E C8 39 5	CS 83 81	CS 83 83	CS 83 82	H S8 38 1
1	Comes to the class on time	4.6	4.9	4.6	4.9	4.6	4.9	4.5	4.9	4.7
2	Comes Well Prepared for the class	4.6	4.8	4.8	4.8	4.8	4.8	4.7	4.6	4.8
3	Engages class regularly and maintains the discipline	4.5	4.8	4.6	4.7	4.7	4.9	4.6	4.5	4.5
4	Speak clearly and audibly, writes and draws legibly	4.8	4.6	4.9	4.7	4.5	4.8	4.9	4.9	4.7
5	Covers all the topics on time	4.8	4.8	4.7	4.8	4.5	4.9	4.7	4.8	4.6
6	Offers timely assistance and counseling to the students	4.5	4.9	4.7	4.6	4.7	4.7	4.7	4.9	4.9
7	Asks questions to promote interaction and reflective thinking	4.7	4.5	4.5	4.7	4.8	4.5	4.8	4.7	4.8
8	Explain clearly and effectively the concepts / principles with appropriate Examples	4.6	4.7	4.8	4.5	4.8	4.6	4.8	4.6	4.6
9	Encourages, compliments and praises the originality and creativity displayed by the students.	4.7	4.9	4.7	4.6	4.5	4.6	4.7	4.6	4.6
10	Is understanding and unbiased in dealing with the students	4.7	4.8	4.7	4.8	4.8	4.8	4.8	4.7	4.8




 PRINCIPAL
 AALIM MUHAMMED SALEGH
 COLLEGE OF ENGINEERING



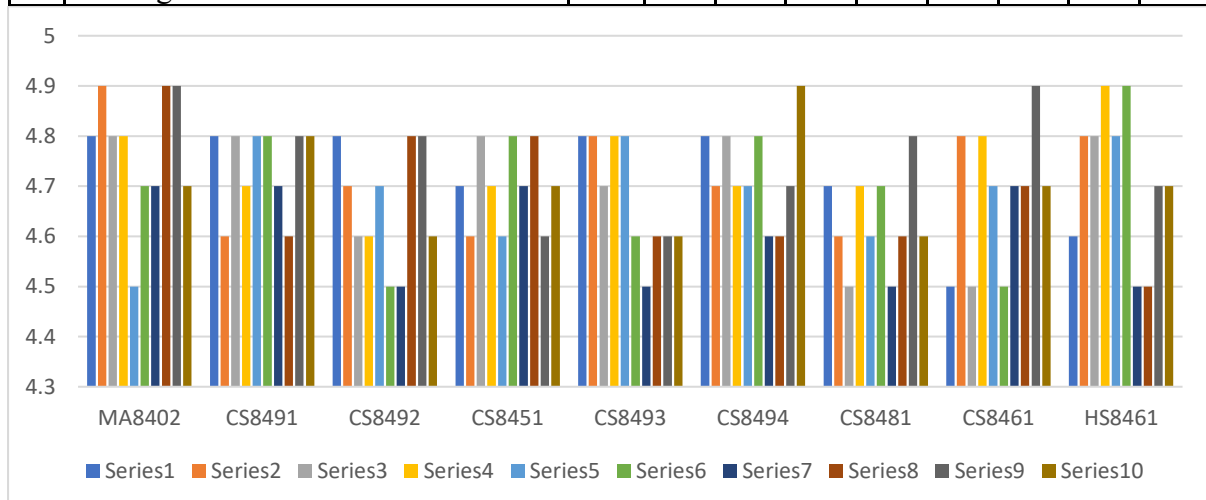
AALIM MUHAMMED SALEGH COLLEGE OF ENGINEERING



Approved by All India Council for Technical Education, New Delhi
 Affiliated to Anna University, Chennai
 NAAC Accredited Institution & NBA Accredited Courses (Mech. Engg., ECE, CSE, IT)
 "Nizara Educational Campus" Muthapudupet, Avadi-IAF, Chennai - 55.

STUDENTS FEEDBACK (ACADEMIC YEAR 2021-2022) : SEM 4

S. No	PARAMETERS	Subject Code								
		MA8402	CS8491	CS8492	CS8451	CS8493	CS8494	CS8481	CS8461	HS8461
1	Comes to the class on time	4.8	4.8	4.8	4.7	4.8	4.8	4.7	4.5	4.6
2	Comes Well Prepared for the class	4.9	4.6	4.7	4.6	4.8	4.7	4.6	4.8	4.8
3	Engages class regularly and maintains the discipline	4.8	4.8	4.6	4.8	4.7	4.8	4.5	4.5	4.8
4	Speak clearly and audibly, writes and draws legibly	4.8	4.7	4.6	4.7	4.8	4.7	4.7	4.8	4.9
5	Covers all the topics on time	4.5	4.8	4.7	4.6	4.8	4.7	4.6	4.7	4.8
6	Offers timely assistance and counseling to the students	4.7	4.8	4.5	4.8	4.6	4.8	4.7	4.5	4.9
7	Asks questions to promote interaction and reflective thinking	4.7	4.7	4.5	4.7	4.5	4.6	4.5	4.7	4.5
8	Explain clearly and effectively the concepts / principles with appropriate Examples	4.9	4.6	4.8	4.8	4.6	4.6	4.6	4.7	4.5
9	Encourages, compliments and praises the originality and creativity displayed by the students.	4.9	4.8	4.8	4.6	4.6	4.7	4.8	4.9	4.7
10	Is understanding and unbiased in dealing with the students	4.7	4.8	4.6	4.7	4.6	4.9	4.6	4.7	4.7



(Signature)
PRINCIPAL
AALIM MUHAMMED SALEGH
COLLEGE OF ENGINEERING



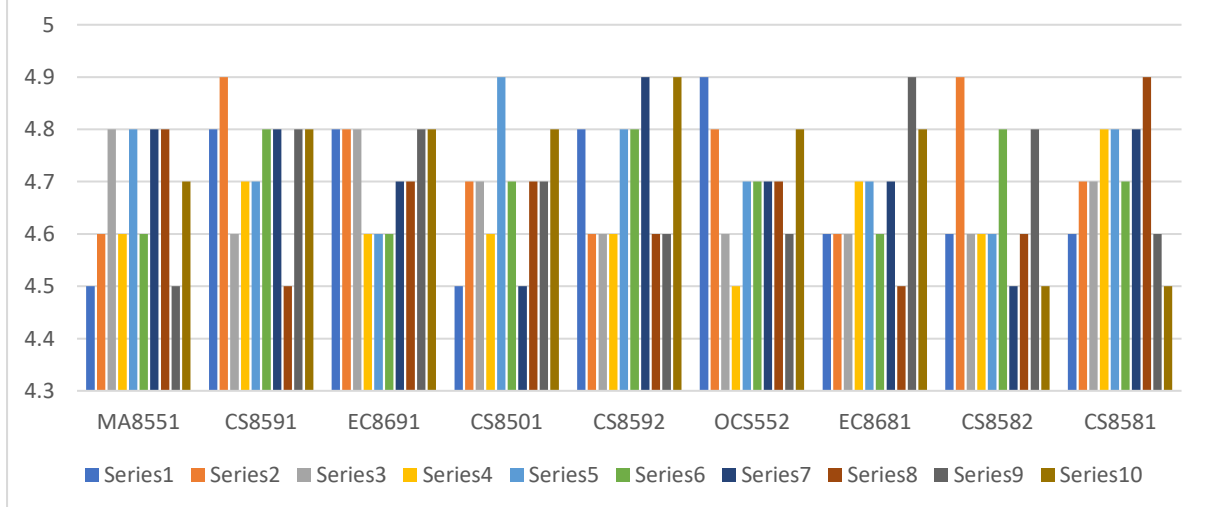
AALIM MUHAMMED SALEGH COLLEGE OF ENGINEERING



Approved by All India Council for Technical Education, New Delhi
 Affiliated to Anna University, Chennai
 NAAC Accredited Institution & NBA Accredited Courses (Mech. Engg., ECE, CSE, IT)
 "Nizara Educational Campus" Muthapudupet, Avadi-IAF, Chennai - 55.

STUDENTS FEEDBACK (ACADEMIC YEAR 2022-2023) : SEM 5

S · N o	PARAMETERS	Subject Code									
		M A8 55 1	CS 85 91	E C8 69 1	CS 85 01	CS 85 92	O CS 55 2	E C8 68 1	CS 85 82	CS 85 81	
1	Comes to the class on time	4.5	4.8	4.8	4.5	4.8	4.9	4.6	4.6	4.6	
2	Comes Well Prepared for the class	4.6	4.9	4.8	4.7	4.6	4.8	4.6	4.9	4.7	
3	Engages class regularly and maintains the discipline	4.8	4.6	4.8	4.7	4.6	4.6	4.6	4.6	4.7	
4	Speak clearly and audibly, writes and draws legibly	4.6	4.7	4.6	4.6	4.6	4.5	4.7	4.6	4.8	
5	Covers all the topics on time	4.8	4.7	4.6	4.9	4.8	4.7	4.7	4.6	4.8	
6	Offers timely assistance and counseling to the students	4.6	4.8	4.6	4.7	4.8	4.7	4.6	4.8	4.7	
7	Asks questions to promote interaction and reflective thinking	4.8	4.8	4.7	4.5	4.9	4.7	4.7	4.5	4.8	
8	Explain clearly and effectively the concepts / principles with appropriate Examples	4.8	4.5	4.7	4.7	4.6	4.7	4.5	4.6	4.9	
9	Encourages, compliments and praises the originality and creativity displayed by the students.	4.5	4.8	4.8	4.7	4.6	4.6	4.9	4.8	4.6	
10	Is understanding and unbiased in dealing with the students	4.7	4.8	4.8	4.8	4.9	4.8	4.8	4.5	4.5	



(Signature)
 PRINCIPAL
 AALIM MUHAMMED SALEGH
 COLLEGE OF ENGINEERING



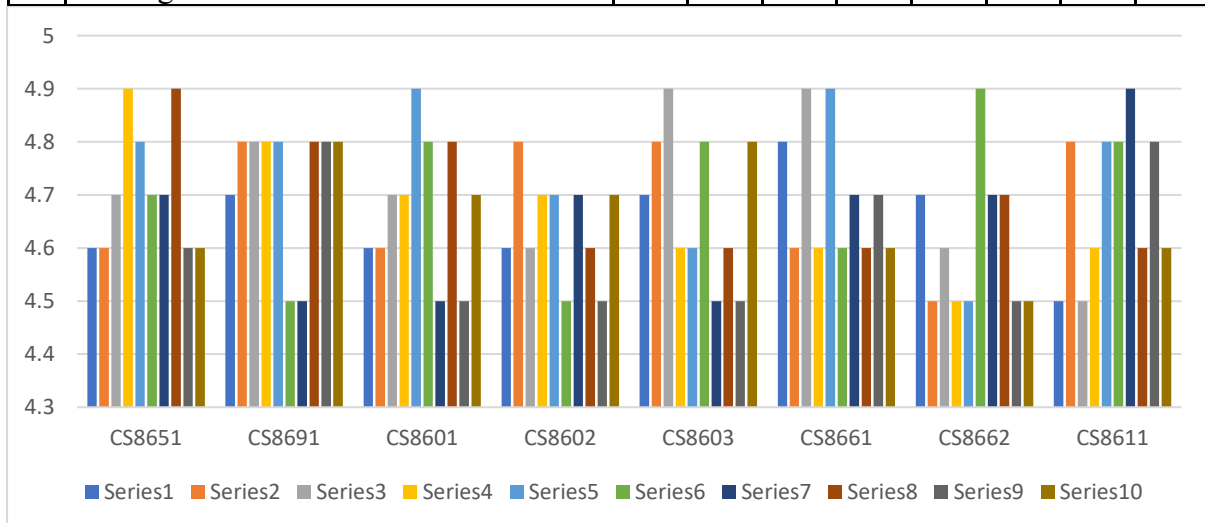
AALIM MUHAMMED SALEGH COLLEGE OF ENGINEERING



Approved by All India Council for Technical Education, New Delhi
 Affiliated to Anna University, Chennai
 NAAC Accredited Institution & NBA Accredited Courses (Mech. Engg., ECE, CSE, IT)
 "Nizara Educational Campus" Muthapudupet, Avadi-IAF, Chennai - 55.

STUDENTS FEEDBACK (ACADEMIC YEAR 2022-2023) : SEM 6

S. No	PARAMETERS	Subject Code							
		CS 86 51	CS 86 91	CS 86 01	CS 86 02	CS 86 03	CS 86 61	CS 86 62	CS 86 11
1	Comes to the class on time	4.6	4.7	4.6	4.6	4.7	4.8	4.7	4.5
2	Comes Well Prepared for the class	4.6	4.8	4.6	4.8	4.8	4.6	4.5	4.8
3	Engages class regularly and maintains the discipline	4.7	4.8	4.7	4.6	4.9	4.9	4.6	4.5
4	Speak clearly and audibly, writes and draws legibly	4.9	4.8	4.7	4.7	4.6	4.6	4.5	4.6
5	Covers all the topics on time	4.8	4.8	4.9	4.7	4.6	4.9	4.5	4.8
6	Offers timely assistance and counseling to the students	4.7	4.5	4.8	4.5	4.8	4.6	4.9	4.8
7	Asks questions to promote interaction and reflective thinking	4.7	4.5	4.5	4.7	4.5	4.7	4.7	4.9
8	Explain clearly and effectively the concepts / principles with appropriate Examples	4.9	4.8	4.8	4.6	4.6	4.6	4.7	4.6
9	Encourages, compliments and praises the originality and creativity displayed by the students.	4.6	4.8	4.5	4.5	4.5	4.7	4.5	4.8
10	Is understanding and unbiased in dealing with the students	4.6	4.8	4.7	4.7	4.8	4.6	4.5	4.6




 PRINCIPAL
 AALIM MUHAMMED SALEGH
 COLLEGE OF ENGINEERING



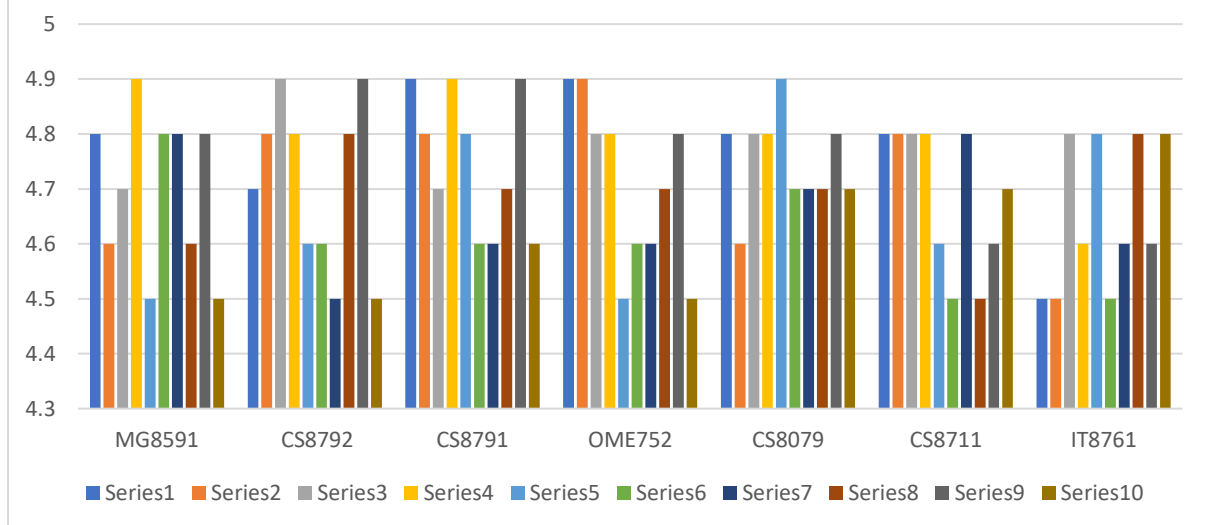
AALIM MUHAMMAD SALEGH COLLEGE OF ENGINEERING



Approved by All India Council for Technical Education, New Delhi
 Affiliated to Anna University, Chennai
 NAAC Accredited Institution & NBA Accredited Courses (Mech. Engg., ECE, CSE, IT)
 "Nizara Educational Campus" Muthapudupet, Avadi-IAF, Chennai - 55.

STUDENTS FEEDBACK (ACADEMIC YEAR 2023-2024) : SEM 7

S. No	PARAMETERS	Subject Code						
		MG 859 1	CS 879 2	CS 879 1	OM E75 2	CS 807 9	CS 871 1	IT 87 61
1	Comes to the class on time	4.8	4.7	4.9	4.9	4.8	4.8	4.5
2	Comes Well Prepared for the class	4.6	4.8	4.8	4.9	4.6	4.8	4.5
3	Engages class regularly and maintains the discipline	4.7	4.9	4.7	4.8	4.8	4.8	4.8
4	Speak clearly and audibly, writes and draws legibly	4.9	4.8	4.9	4.8	4.8	4.8	4.6
5	Covers all the topics on time	4.5	4.6	4.8	4.5	4.9	4.6	4.8
6	Offers timely assistance and counseling to the students	4.8	4.6	4.6	4.6	4.7	4.5	4.5
7	Asks questions to promote interaction and reflective thinking	4.8	4.5	4.6	4.6	4.7	4.8	4.6
8	Explain clearly and effectively the concepts / principles with appropriate Examples	4.6	4.8	4.7	4.7	4.7	4.5	4.8
9	Encourages, compliments and praises the originality and creativity displayed by the students.	4.8	4.9	4.9	4.8	4.8	4.6	4.6
10	Is understanding and unbiased in dealing with the students	4.5	4.5	4.6	4.5	4.7	4.7	4.8



PRINCIPAL
 AALIM MUHAMMAD SALEGH
 COLLEGE OF ENGINEERING



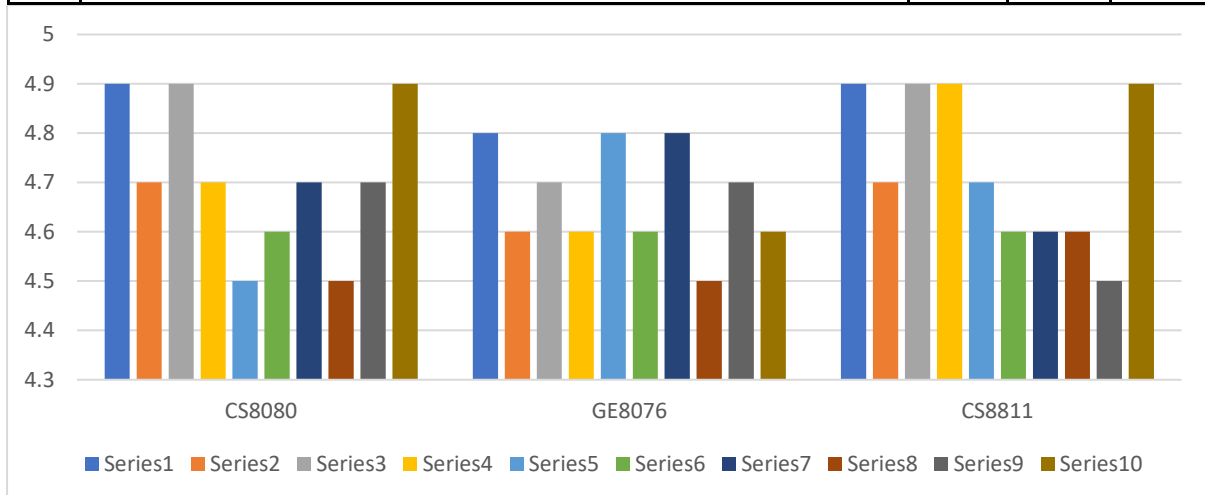
AALIM MUHAMMED SALEGH COLLEGE OF ENGINEERING



Approved by All India Council for Technical Education, New Delhi
 Affiliated to Anna University, Chennai
 NAAC Accredited Institution & NBA Accredited Courses (Mech. Engg., ECE, CSE, IT)
 "Nizara Educational Campus" Muthapudupet, Avadi-IAF, Chennai - 55.

STUDENTS FEEDBACK (ACADEMIC YEAR 2023-2024) : SEM 8

S. No	PARAMETERS	Subject Code		
		CS8 080	GE8 076	CS8 811
1	Comes to the class on time	4.9	4.8	4.9
2	Comes Well Prepared for the class	4.7	4.6	4.7
3	Engages class regularly and maintains the discipline	4.9	4.7	4.9
4	Speak clearly and audibly, writes and draws legibly	4.7	4.6	4.9
5	Covers all the topics on time	4.5	4.8	4.7
6	Offers timely assistance and counseling to the students	4.6	4.6	4.6
7	Asks questions to promote interaction and reflective thinking	4.7	4.8	4.6
8	Explain clearly and effectively the concepts / principles with appropriate Examples	4.5	4.5	4.6
9	Encourages, compliments and praises the originality and creativity displayed by the students.	4.7	4.7	4.5
10	Is understanding and unbiased in dealing with the students	4.9	4.6	4.9



(Signature)
 PRINCIPAL
 AALIM MUHAMMED SALEGH
 COLLEGE OF ENGINEERING



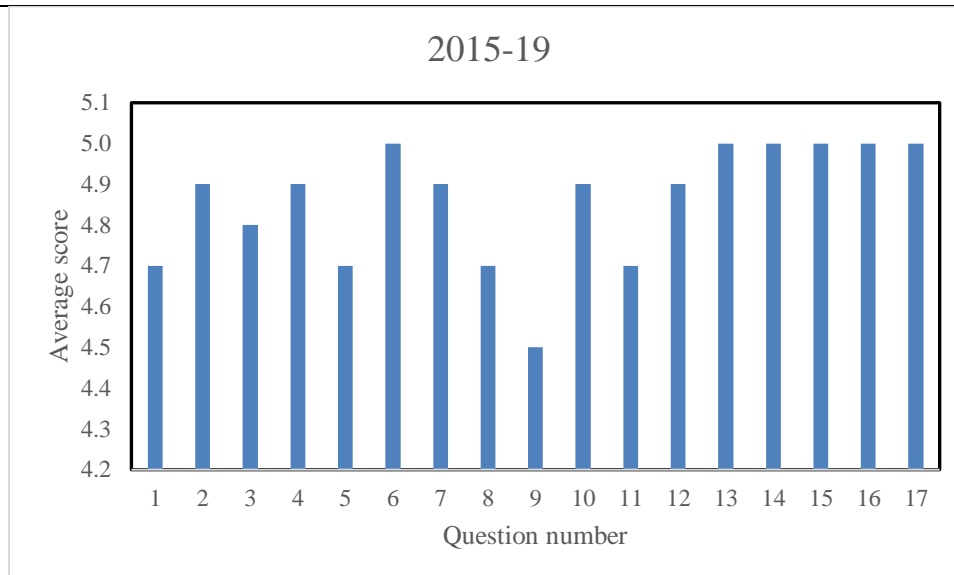
AALIM MUHAMMED SALEGH COLLEGE OF ENGINEERING



Approved by All India Council for Technical Education, New Delhi
 Affiliated to Anna University, Chennai
 NAAC Accredited Institution & NBA Accredited Courses (Mech. Engg., ECE, CSE, IT)
 "Nizara Educational Campus" Muthapudupet, Avadi-IAF, Chennai - 55.

ALUMINI FEEDBACK (ACADEMIC YEAR 2018-2019)

ALUMINI FEEDBACK ANALYSIS		
S.No	Questions	2015-19
1	How do you rate your learning proces at college?	4.7
2	Technical knowledge obtained during your period of study.	4.9
3	How do you rate the teaching process in the Institution?	4.8
4	How do you rate the Extra-curricular activities in the Institution?	4.9
5	How do you rate the co-curricular activities in the institution?	4.7
6	Faculty -Student interaction.	5.0
7	Overall discipline	4.9
8	your Opinion about placement and training.	4.7
9	Transport availability during your studies.	4.5
10	Hostel Facilities	4.9
11	How do you rate the relevance of the training given in the college to your present job?	4.7
12	Counseling and Guidance provided for the students.	4.9
13	How do you rate the facilities provided in the institution?	5.0
14	Laboratories / Equipments	5.0
15	Library	5.0
16	Computers/Internet	5.0
17	Overall assessment	5.0
Average:		4.9




PRINCIPAL
AALIM MUHAMMED SALEGH
COLLEGE OF ENGINEERING



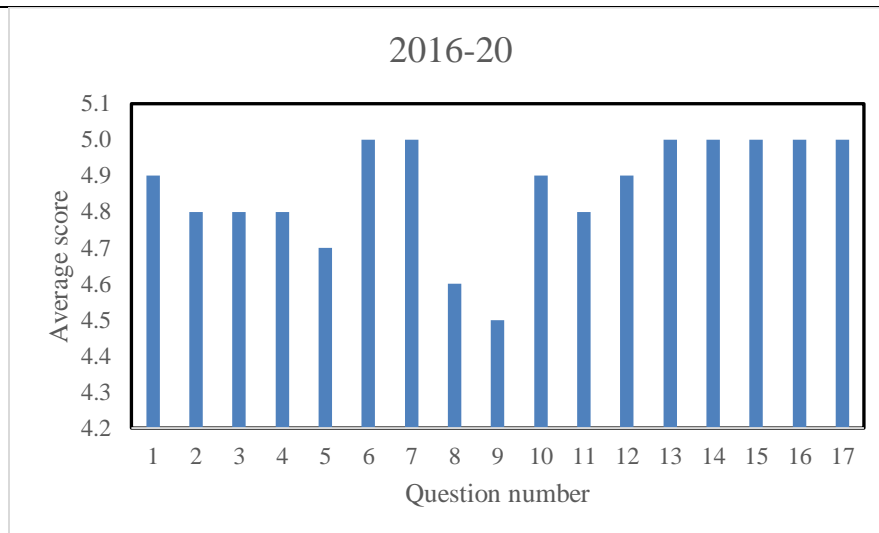
AALIM MUHAMMED SALEGH COLLEGE OF ENGINEERING



Approved by All India Council for Technical Education, New Delhi
 Affiliated to Anna University, Chennai
 NAAC Accredited Institution & NBA Accredited Courses (Mech. Engg., ECE, CSE, IT)
 "Nizara Educational Campus" Muthapudupet, Avadi-IAF, Chennai - 55.

ALUMINI FEEDBACK (ACADEMIC YEAR 2019-2020)

ALUMINI FEEDBACK ANALYSIS		
S.No	Questions	2016-20
1	How do you rate your learning proces at college?	4.9
2	Technical knowledge obtained during your period of study.	4.8
3	How do you rate the teaching process in the Institution?	4.8
4	How do you rate the Extra-curricular activities in the Institution?	4.8
5	How do you rate the co-curricular activities in the institution?	4.7
6	Faculty -Student interaction.	5.0
7	Overall discipline	5.0
8	your Opinion about placement and training.	4.6
9	Transport availability during your studies.	4.5
10	Hostel Facilities	4.9
11	How do you rate the relevance of the training given in the college to your present job?	4.8
12	Counseling and Guidance provided for the students.	4.9
13	How do you rate the facilities provided in the institution?	5.0
14	Laboratories / Equipments	5.0
15	Library	5.0
16	Computers/Internet	5.0
17	Overall assessment	5.0
		Average: 4.9




PRINCIPAL
 AALIM MUHAMMED SALEGH
 COLLEGE OF ENGINEERING



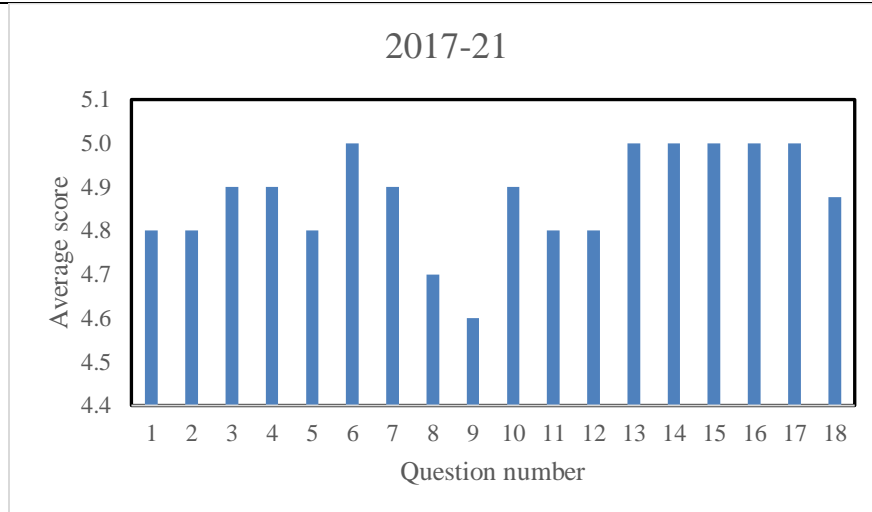
AALIM MUHAMMED SALEGH COLLEGE OF ENGINEERING



Approved by All India Council for Technical Education, New Delhi
 Affiliated to Anna University, Chennai
 NAAC Accredited Institution & NBA Accredited Courses (Mech. Engg., ECE, CSE, IT)
 "Nizara Educational Campus" Muthapudupet, Avadi-IAF, Chennai - 55.

ALUMINI FEEDBACK (ACADEMIC YEAR 2020-2021)

ALUMNI FEEDBACK ANALYSIS		
S.No	Questions	2017-21
1	How do you rate your learning proces at college?	4.8
2	Technical knowledge obtained during your period of study.	4.8
3	How do you rate the teaching process in the Institution?	4.9
4	How do you rate the Extra-curricular activities in the Institution?	4.9
5	How do you rate the co-curricular activities in the institution?	4.8
6	Faculty -Student interaction.	5.0
7	Overall discipline	4.9
8	your Opinion about placement and training.	4.7
9	Transport availability during your studies.	4.6
10	Hostel Facilities	4.9
11	How do you rate the relevance of the training given in the college to your present job?	4.8
12	Counseling and Guidance provided for the students.	4.8
13	How do you rate the facilities provided in the institution?	5.0
14	Laboratories / Equipments	5.0
15	Library	5.0
16	Computers/Internet	5.0
17	Overall assesment	5.0
	Average:	4.9




PRINCIPAL
AALIM MUHAMMED SALEGH
COLLEGE OF ENGINEERING



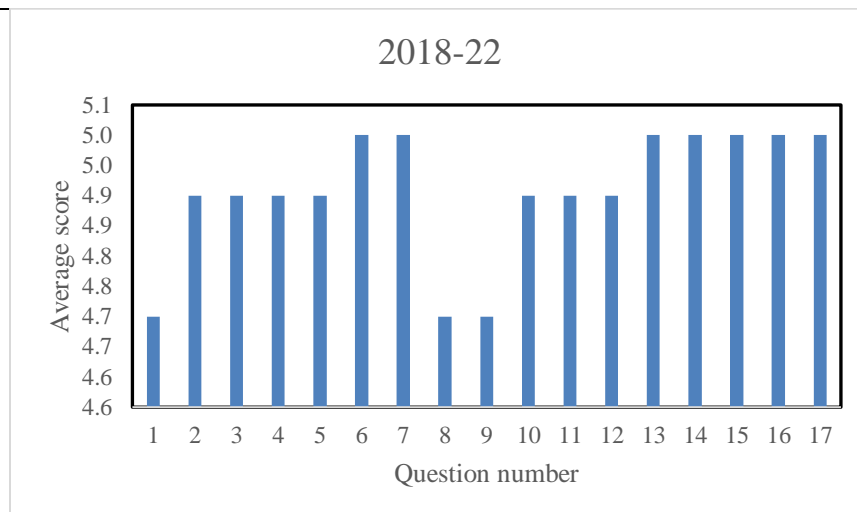
AALIM MUHAMMED SALEGH COLLEGE OF ENGINEERING



Approved by All India Council for Technical Education, New Delhi
 Affiliated to Anna University, Chennai
 NAAC Accredited Institution & NBA Accredited Courses (Mech. Engg., ECE, CSE, IT)
 "Nizara Educational Campus" Muthapudupet, Avadi-IAF, Chennai - 55.

ALUMINI FEEDBACK (ACADEMIC YEAR 2021-2022)

ALUMINI FEEDBACK ANALYSIS		
S.No	Questions	2018-22
1	How do you rate your learning proces at college?	4.7
2	Technical knowledge obtained during your period of study.	4.9
3	How do you rate the teaching process in the Institution?	4.9
4	How do you rate the Extra-curricular activities in the Institution?	4.9
5	How do you rate the co-curricular activities in the institution?	4.9
6	Faculty -Student interaction.	5.0
7	Overall discipline	5.0
8	your Opinion about placement and training.	4.7
9	Transport availability during your studies.	4.7
10	Hostel Facilities	4.9
11	How do you rate the relevance of the training given in the college to your present job?	4.9
12	Counseling and Guidance provided for the students.	4.9
13	How do you rate the facilities provided in the institution?	5.0
14	Laboratories / Equipments	5.0
15	Library	5.0
16	Computers/Internet	5.0
17	Overall assessment	5.0
		Average: 4.9




 PRINCIPAL
 AALIM MUHAMMED SALEGH
 COLLEGE OF ENGINEERING



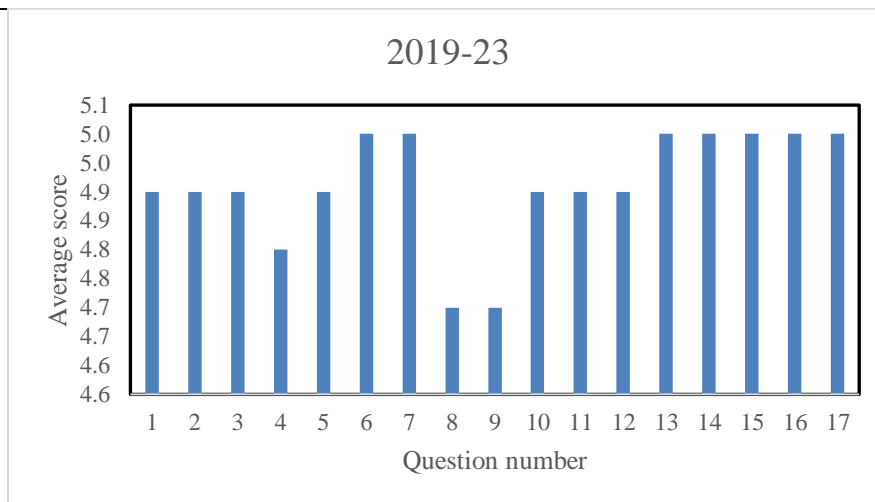
AALIM MUHAMMED SALEGH COLLEGE OF ENGINEERING



Approved by All India Council for Technical Education, New Delhi
 Affiliated to Anna University, Chennai
 NAAC Accredited Institution & NBA Accredited Courses (Mech. Engg., ECE, CSE, IT)
 "Nizara Educational Campus" Muthapudupet, Avadi-IAF, Chennai - 55.

ALUMINI FEEDBACK (ACADEMIC YEAR 2022-2023)

ALUMNI FEEDBACK ANALYSIS		
S.No	Questions	2019-23
1	How do you rate your learning proces at college?	4.9
2	Technical knowledge obtained during your period of study.	4.9
3	How do you rate the teaching process in the Institution?	4.9
4	How do you rate the Extra-curricular activities in the Institution?	4.8
5	How do you rate the co-curricular activities in the institution?	4.9
6	Faculty -Student interaction.	5.0
7	Overall discipline	5.0
8	your Opinion about placement and training.	4.7
9	Transport availability during your studies.	4.7
10	Hostel Facilities	4.9
11	How do you rate the relevance of the training given in the college to your present job?	4.9
12	Counseling and Guidance provided for the students.	4.9
13	How do you rate the facilities provided in the institution?	5.0
14	Laboratories / Equipments	5.0
15	Library	5.0
16	Computers/Internet	5.0
17	Overall assessment	5.0
		Average:
		4.9




PRINCIPAL
AALIM MUHAMMED SALEGH
COLLEGE OF ENGINEERING



AALIM MUHAMMED SALEGH COLLEGE OF ENGINEERING

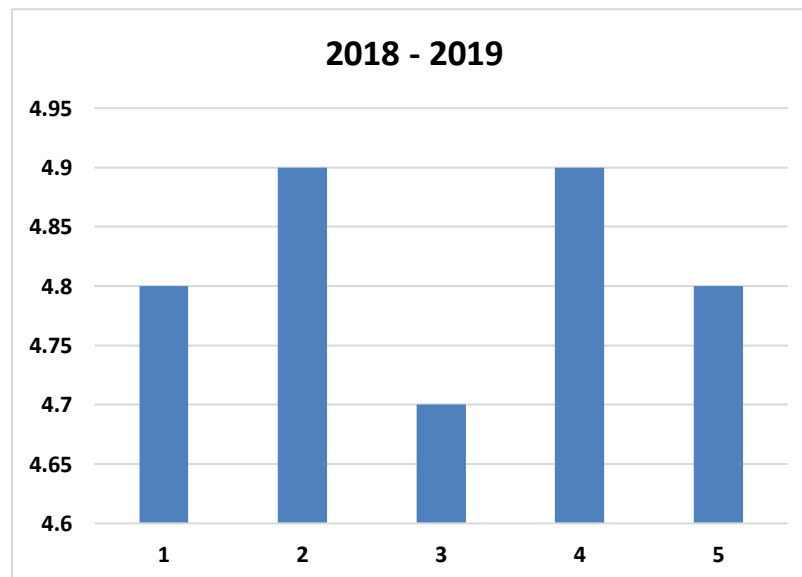


Approved by All India Council for Technical Education, New Delhi
Affiliated to Anna University, Chennai

NAAC Accredited Institution & NBA Accredited Courses (Mech. Engg., ECE, CSE, IT)
"Nizara Educational Campus" Muthapudupet, Avadi-IAF, Chennai - 55.

PARENT FEEDBACK (ACADEMIC YEAR 2018-2019)

S.No	PARAMETERS	RATING
1	Cleanliness, ambience and security arrangements in the college campus	4.8
2	Facilities Provided by the college (Laboratory / Library / Hostel / Transport)	4.9
3	The Quality of teaching offered by the college	4.7
4	Examination system adapted by the college.	4.9
5	Students involvement in Social activities	4.8




PRINCIPAL
AALIM MUHAMMED SALEGH
COLLEGE OF ENGINEERING



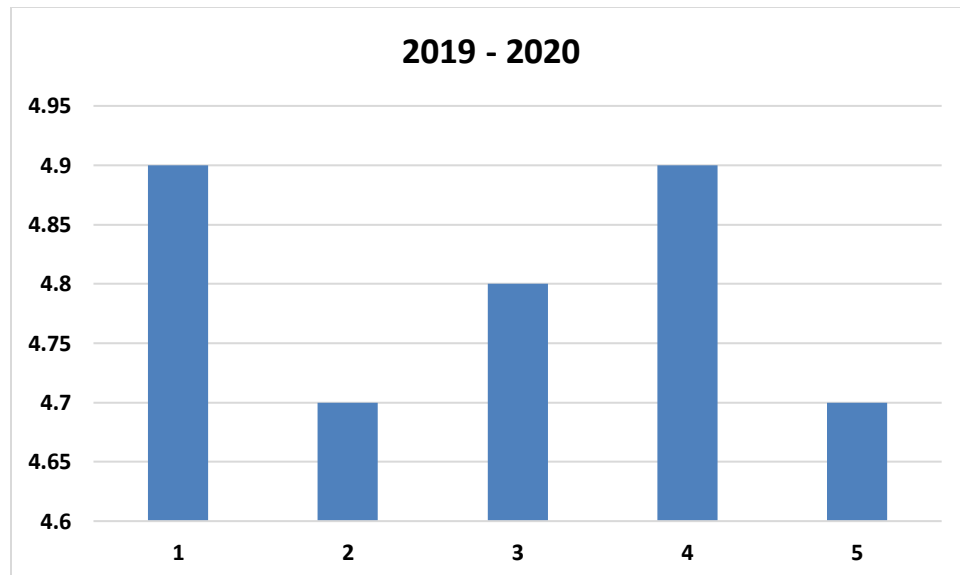
AALIM MUHAMMED SALEGH COLLEGE OF ENGINEERING



Approved by All India Council for Technical Education, New Delhi
Affiliated to Anna University, Chennai
NAAC Accredited Institution & NBA Accredited Courses (Mech. Engg., ECE, CSE, IT)
"Nizara Educational Campus" Muthapudupet, Avadi-IAF, Chennai - 55.

PARENT FEEDBACK (ACADEMIC YEAR 2019-2020)

S.No	PARAMETERS	RATING
1	Cleanliness, ambience and security arrangements in the college campus	4.9
2	Facilities Provided by the college (Laboratory / Library / Hostel / Transport)	4.7
3	The Quality of teaching offered by the college	4.8
4	Examination system adapted by the college.	4.9
5	Students involvement in Social activities	4.7




PRINCIPAL
AALIM MUHAMMED SALEGH
COLLEGE OF ENGINEERING



AALIM MUHAMMED SALEGH COLLEGE OF ENGINEERING

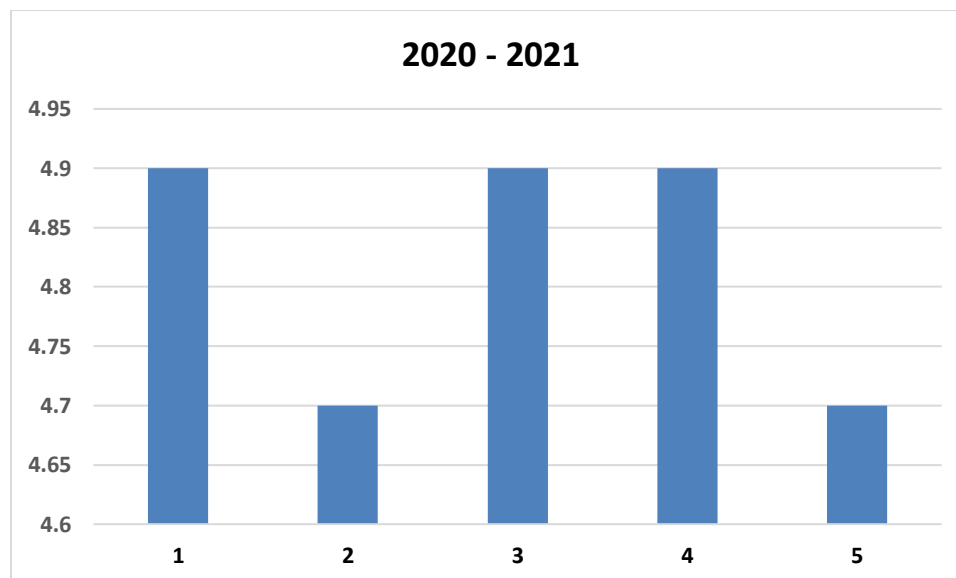


Approved by All India Council for Technical Education, New Delhi
Affiliated to Anna University, Chennai

NAAC Accredited Institution & NBA Accredited Courses (Mech. Engg., ECE, CSE, IT)
"Nizara Educational Campus" Muthapudupet, Avadi-IAF, Chennai - 55.

PARENT FEEDBACK (ACADEMIC YEAR 2020-2021)

S.No	PARAMETERS	RATING
1	Cleanliness, ambience and security arrangements in the college campus	4.9
2	Facilities Provided by the college (Laboratory / Library / Hostel / Transport)	4.7
3	The Quality of teaching offered by the college	4.9
4	Examination system adapted by the college.	4.9
5	Students involvement in Social activities	4.7




PRINCIPAL
AALIM MUHAMMED SALEGH
COLLEGE OF ENGINEERING



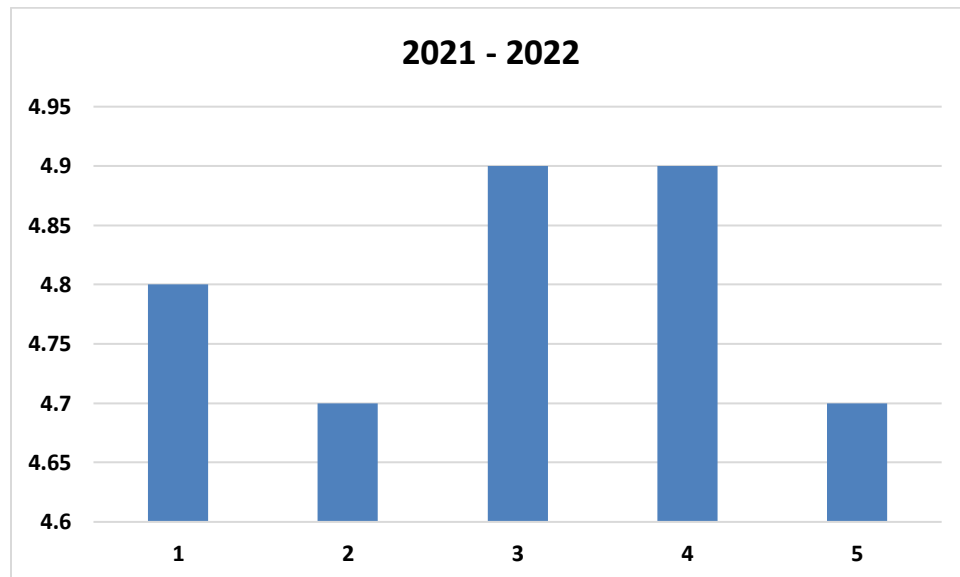
AALIM MUHAMMED SALEGH COLLEGE OF ENGINEERING



Approved by All India Council for Technical Education, New Delhi
Affiliated to Anna University, Chennai
NAAC Accredited Institution & NBA Accredited Courses (Mech. Engg., ECE, CSE, IT)
"Nizara Educational Campus" Muthapudupet, Avadi-IAF, Chennai - 55.

PARENT FEEDBACK (ACADEMIC YEAR 2021-2022)

S.No	PARAMETERS	RATING
1	Cleanliness, ambience and security arrangements in the college campus	4.8
2	Facilities Provided by the college (Laboratory / Library / Hostel / Transport)	4.7
3	The Quality of teaching offered by the college	4.9
4	Examination system adapted by the college.	4.9
5	Students involvement in Social activities	4.7




PRINCIPAL
AALIM MUHAMMED SALEGH
COLLEGE OF ENGINEERING



AALIM MUHAMMED SALEGH COLLEGE OF ENGINEERING

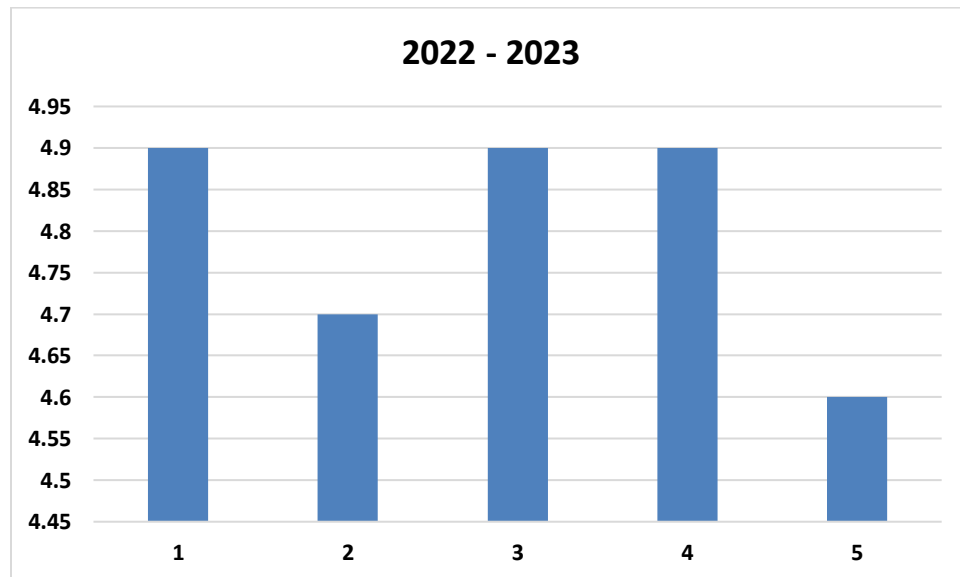


Approved by All India Council for Technical Education, New Delhi
Affiliated to Anna University, Chennai

NAAC Accredited Institution & NBA Accredited Courses (Mech. Engg., ECE, CSE, IT)
"Nizara Educational Campus" Muthapudupet, Avadi-IAF, Chennai - 55.

PARENT FEEDBACK (ACADEMIC YEAR 2022-2023)

S.No	PARAMETERS	RATING
1	Cleanliness, ambience and security arrangements in the college campus	4.9
2	Facilities Provided by the college (Laboratory / Library / Hostel / Transport)	4.7
3	The Quality of teaching offered by the college	4.9
4	Examination system adapted by the college.	4.9
5	Students involvement in Social activities	4.6




PRINCIPAL
AALIM MUHAMMED SALEGH
COLLEGE OF ENGINEERING

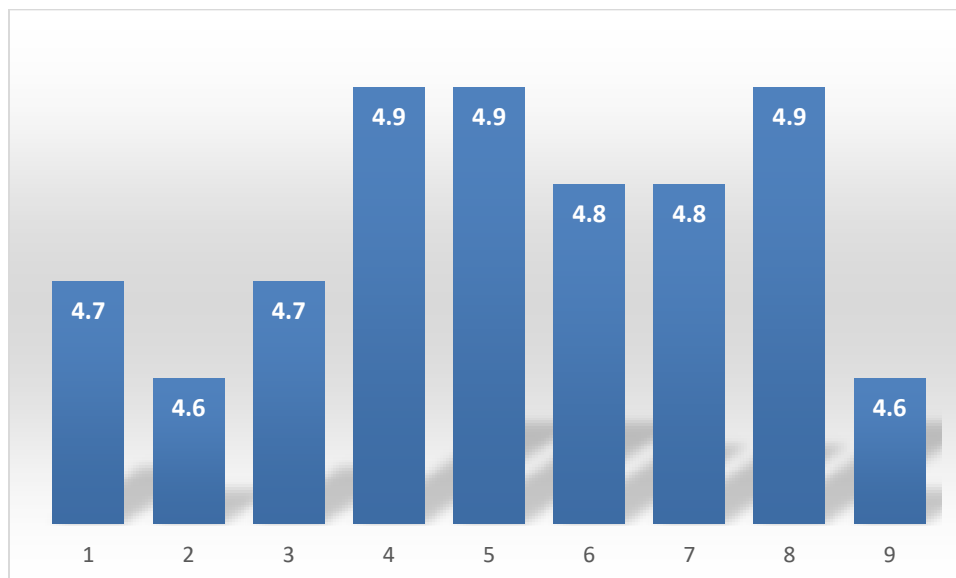


**AALIM MUHAMMED SALEGH
COLLEGE OF ENGINEERING
AVADI - IAF, CHENNAI-55**



**DEPARTMENT OF COMPUTER SCIENCE AND ENGINEERING
EMPLOYER FEEDBACK ANALYSIS
Academic year 2018-2019**

S.No	Questions	Rating
1	Views on Strengths of our graduates	4.7
2	How do you find our students in applying the knowledge of maths, science in the solution of complying engineering problems?	4.6
3	How you found your students with respect to technical skills?	4.7
4	How are you rate our students with respect to their ethical and moral values?	4.9
5	How you rate our students with respect to work?	4.9
6	Were you happy with the support you received from the college during placement drive?	4.8
7	How you rate our students with respect to communication skills?	4.8
8	How you rate our students with respect to being open to new ideas and learning new technologies?	4.9
9	How do you rate our student with respect to overall performance in terms of percentage contribution to your organisation?	4.6




**PRINCIPAL
AALIM MUHAMMED SALEGH
COLLEGE OF ENGINEERING**



AALIM MUHAMMED SALEGH COLLEGE OF ENGINEERING

AVADI - IAF, CHENNAI-55

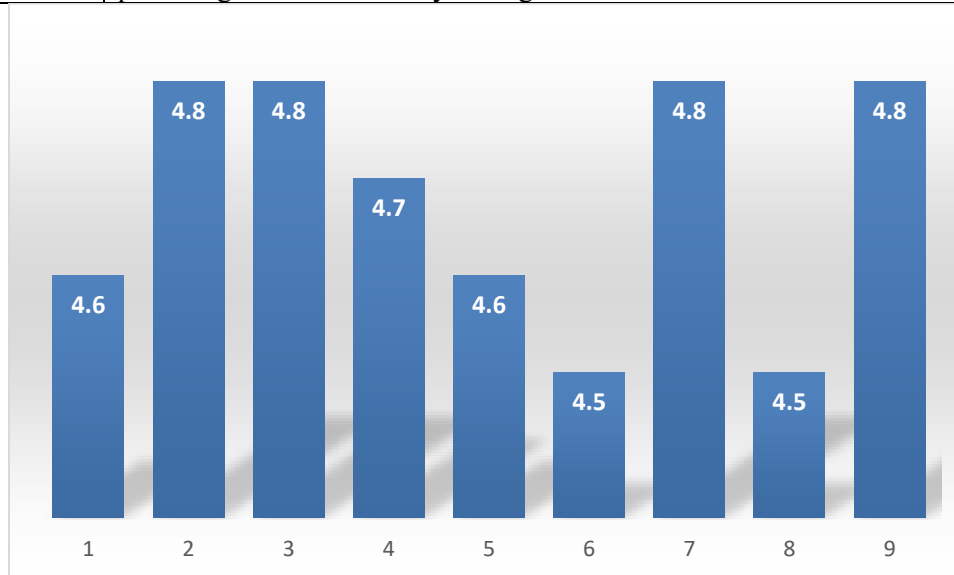


DEPARTMENT OF COMPUTER SCIENCE AND ENGINEERING

EMPLOYER FEEDBACK ANALYSIS

Academic year 2019-2020

S.No	Questions	Rating
1	Views on Strengths of our graduates	4.6
2	How do you find our students in applying the knowledge of maths, science in the solution of complying engineering problems?	4.8
3	How you found your students with respect to technical skills?	4.8
4	How are you rate our students with respect to their ethical and moral values?	4.7
5	How you rate our students with respect to work?	4.6
6	Were you happy with the support you received from the college during placement drive?	4.5
7	How you rate our students with respect to communication skills?	4.8
8	How you rate our students with respect to being open to new ideas and learning new technologies?	4.5
9	How do you rate our student with respect to overall performance in terms of percentage contribution to your organisation?	4.8




PRINCIPAL
AALIM MUHAMMED SALEGH
COLLEGE OF ENGINEERING

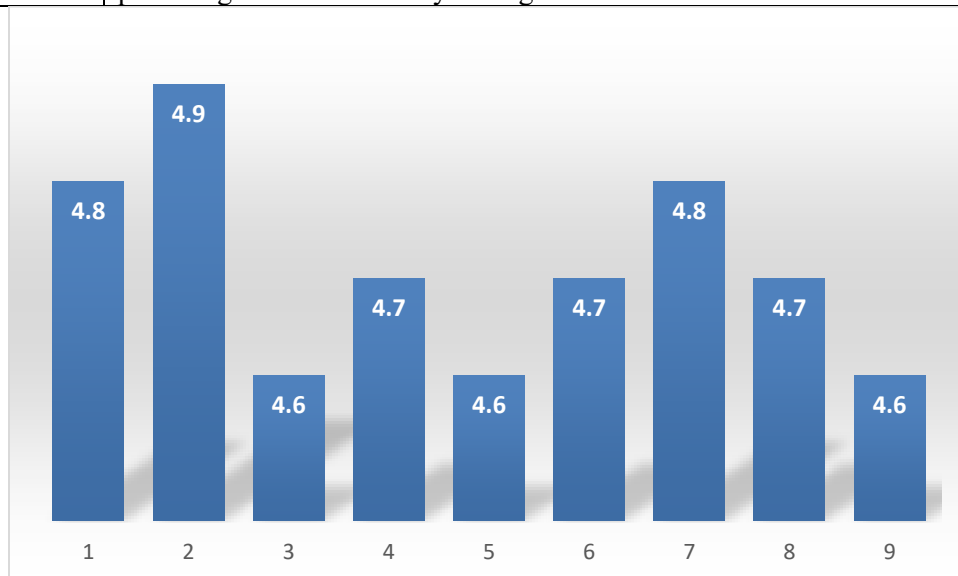


**AALIM MUHAMMED SALEGH
COLLEGE OF ENGINEERING
AVADI - IAF, CHENNAI-55**



**DEPARTMENT OF COMPUTER SCIENCE AND ENGINEERING
EMPLOYER FEEDBACK ANALYSIS
Academic year 2020-2021**

S.No	Questions	Rating
1	Views on Strengths of our graduates	4.8
2	How do you find our students in applying the knowledge of maths, science in the solution of complying engineering problems?	4.9
3	How you found your students with respect to technical skills?	4.6
4	How are you rate our students with respect to their ethical and moral values?	4.7
5	How you rate our students with respect to work?	4.6
6	Were you happy with the support you received from the college during placement drive?	4.7
7	How you rate our students with respect to communication skills?	4.8
8	How you rate our students with respect to being open to new ideas and learning new technologies?	4.7
9	How do you rate our student with respect to overall performance in terms of percentage contribution to your organisation?	4.6




**PRINCIPAL
AALIM MUHAMMED SALEGH
COLLEGE OF ENGINEERING**

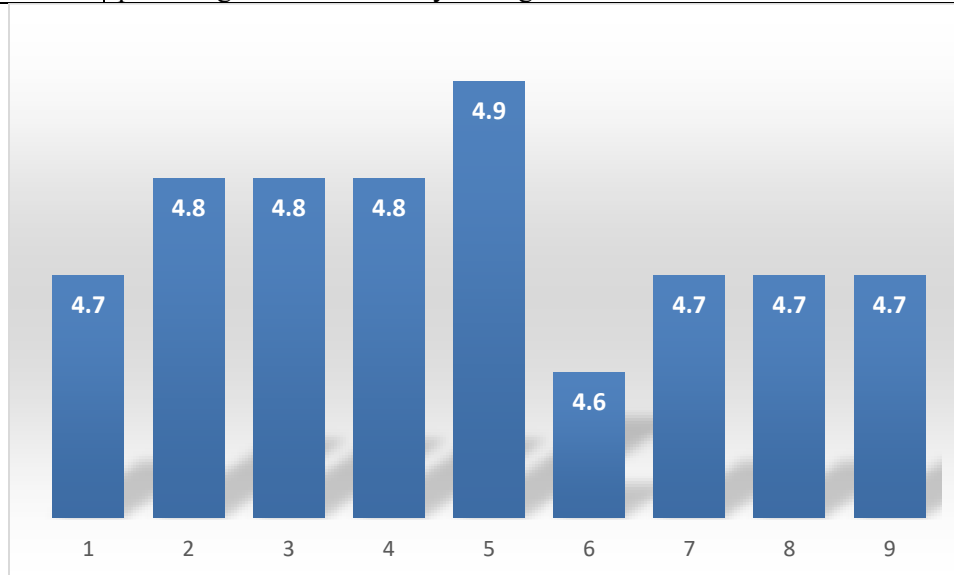


**AALIM MUHAMMED SALEGH
COLLEGE OF ENGINEERING
AVADI - IAF, CHENNAI-55**



**DEPARTMENT OF COMPUTER SCIENCE AND ENGINEERING
EMPLOYER FEEDBACK ANALYSIS
Academic year 2021-2022**

S.No	Questions	Rating
1	Views on Strengths of our graduates	4.7
2	How do you find our students in applying the knowledge of maths, science in the solution of complying engineering problems?	4.8
3	How you found your students with respect to technical skills?	4.8
4	How are you rate our students with respect to their ethical and moral values?	4.8
5	How you rate our students with respect to work?	4.9
6	Were you happy with the support you received from the college during placement drive?	4.6
7	How you rate our students with respect to communication skills?	4.7
8	How you rate our students with respect to being open to new ideas and learning new technologies?	4.7
9	How do you rate our student with respect to overall performance in terms of percentage contribution to your organisation?	4.7




**PRINCIPAL
AALIM MUHAMMED SALEGH
COLLEGE OF ENGINEERING**



**AALIM MUHAMMED SALEGH
COLLEGE OF ENGINEERING**

AVADI - IAF, CHENNAI-55

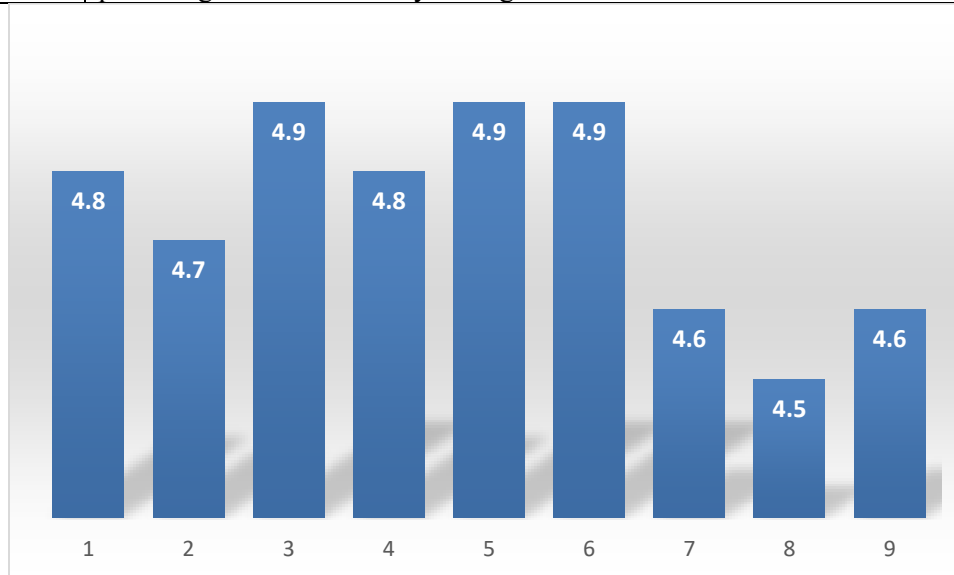


DEPARTMENT OF COMPUTER SCIENCE AND ENGINEERING

EMPLOYER FEEDBACK ANALYSIS

Academic year 2022-2023

S.No	Questions	Rating
1	Views on Strengths of our graduates	4.8
2	How do you find our students in applying the knowledge of maths, science in the solution of complying engineering problems?	4.7
3	How you found your students with respect to technical skills?	4.9
4	How are you rate our students with respect to their ethical and moral values?	4.8
5	How you rate our students with respect to work?	4.9
6	Were you happy with the support you received from the college during placement drive?	4.9
7	How you rate our students with respect to communication skills?	4.6
8	How you rate our students with respect to being open to new ideas and learning new technologies?	4.5
9	How do you rate our student with respect to overall performance in terms of percentage contribution to your organisation?	4.6




**PRINCIPAL
AALIM MUHAMMED SALEGH
COLLEGE OF ENGINEERING**