



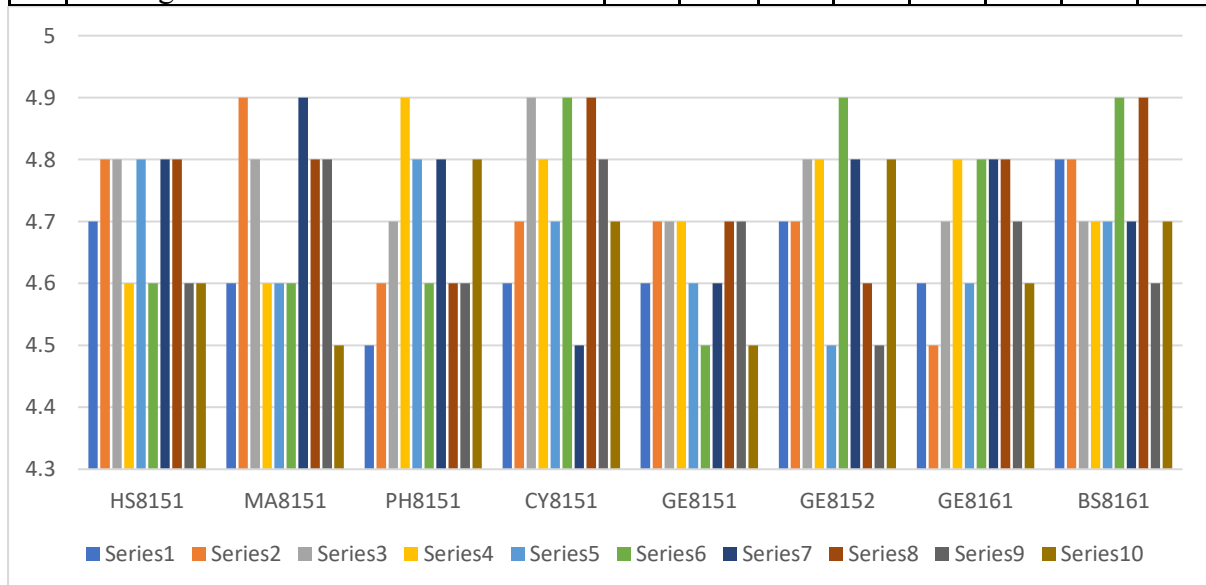
AALIM MUHAMMED SALEGH COLLEGE OF ENGINEERING



Approved by All India Council for Technical Education, New Delhi
 Affiliated to Anna University, Chennai
 NAAC Accredited Institution & NBA Accredited Courses (Mech. Engg., ECE, CSE, IT)
 "Nizara Educational Campus" Muthapudupet, Avadi-IAF, Chennai - 55.

STUDENTS FEEDBACK (ACADEMIC YEAR 2020-2021): SEM 1

S. No	PARAMETERS	Subject Code							
		HS 81 51	M A8 151	PH 81 51	CY 81 51	GE 81 51	GE 81 52	GE 81 61	BS 81 61
1	Comes to the class on time	4.7	4.6	4.5	4.6	4.6	4.7	4.6	4.8
2	Comes Well Prepared for the class	4.8	4.9	4.6	4.7	4.7	4.7	4.5	4.8
3	Engages class regularly and maintains the discipline	4.8	4.8	4.7	4.9	4.7	4.8	4.7	4.7
4	Speak clearly and audibly, writes and draws legibly	4.6	4.6	4.9	4.8	4.7	4.8	4.8	4.7
5	Covers all the topics on time	4.8	4.6	4.8	4.7	4.6	4.5	4.6	4.7
6	Offers timely assistance and counseling to the students	4.6	4.6	4.6	4.9	4.5	4.9	4.8	4.9
7	Asks questions to promote interaction and reflective thinking	4.8	4.9	4.8	4.5	4.6	4.8	4.8	4.7
8	Explain clearly and effectively the concepts / principles with appropriate Examples	4.8	4.8	4.6	4.9	4.7	4.6	4.8	4.9
9	Encourages, compliments and praises the originality and creativity displayed by the students.	4.6	4.8	4.6	4.8	4.7	4.5	4.7	4.6
10	Is understanding and unbiased in dealing with the students	4.6	4.5	4.8	4.7	4.5	4.8	4.6	4.7



PRINCIPAL
AALIM MUHAMMED SALEGH
COLLEGE OF ENGINEERING



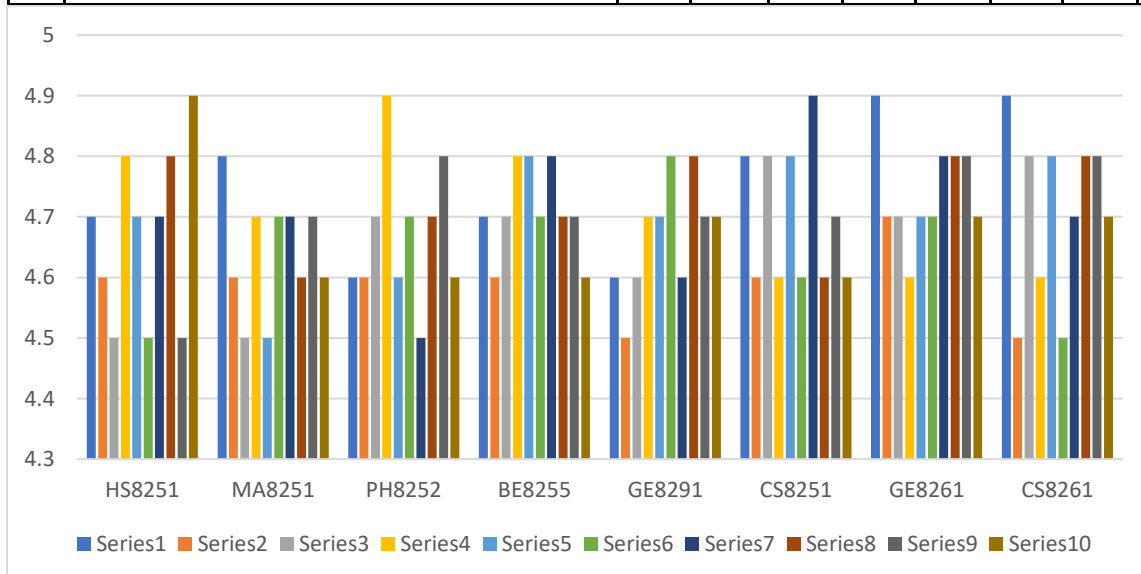
AALIM MUHAMMED SALEGH COLLEGE OF ENGINEERING



Approved by All India Council for Technical Education, New Delhi
 Affiliated to Anna University, Chennai
 NAAC Accredited Institution & NBA Accredited Courses (Mech. Engg., ECE, CSE, IT)
 "Nizara Educational Campus" Muthapudupet, Avadi-IAF, Chennai - 55.

STUDENTS FEEDBACK (ACADEMIC YEAR 2020-2021): SEM 2

S. No	PARAMETERS	Subject Code							
		HS 82 51	M A8 251	PH 82 52	BE 82 55	G E8 29 1	CS 82 51	G E8 26 1	CS 82 61
1	Comes to the class on time	4.7	4.8	4.6	4.7	4.6	4.8	4.9	4.9
2	Comes Well Prepared for the class	4.6	4.6	4.6	4.6	4.5	4.6	4.7	4.5
3	Engages class regularly and maintains the discipline	4.5	4.5	4.7	4.7	4.6	4.8	4.7	4.8
4	Speak clearly and audibly, writes and draws legibly	4.8	4.7	4.9	4.8	4.7	4.6	4.6	4.6
5	Covers all the topics on time	4.7	4.5	4.6	4.8	4.7	4.8	4.7	4.8
6	Offers timely assistance and counseling to the students	4.5	4.7	4.7	4.7	4.8	4.6	4.7	4.5
7	Asks questions to promote interaction and reflective thinking	4.7	4.7	4.5	4.8	4.6	4.9	4.8	4.7
8	Explain clearly and effectively the concepts / principles with appropriate Examples	4.8	4.6	4.7	4.7	4.8	4.6	4.8	4.8
9	Encourages, compliments and praises the originality and creativity displayed by the students.	4.5	4.7	4.8	4.7	4.7	4.7	4.8	4.8
10	Is understanding and unbiased in dealing with the students	4.9	4.6	4.6	4.6	4.7	4.6	4.7	4.7



PRINCIPAL
AALIM MUHAMMED SALEGH
COLLEGE OF ENGINEERING



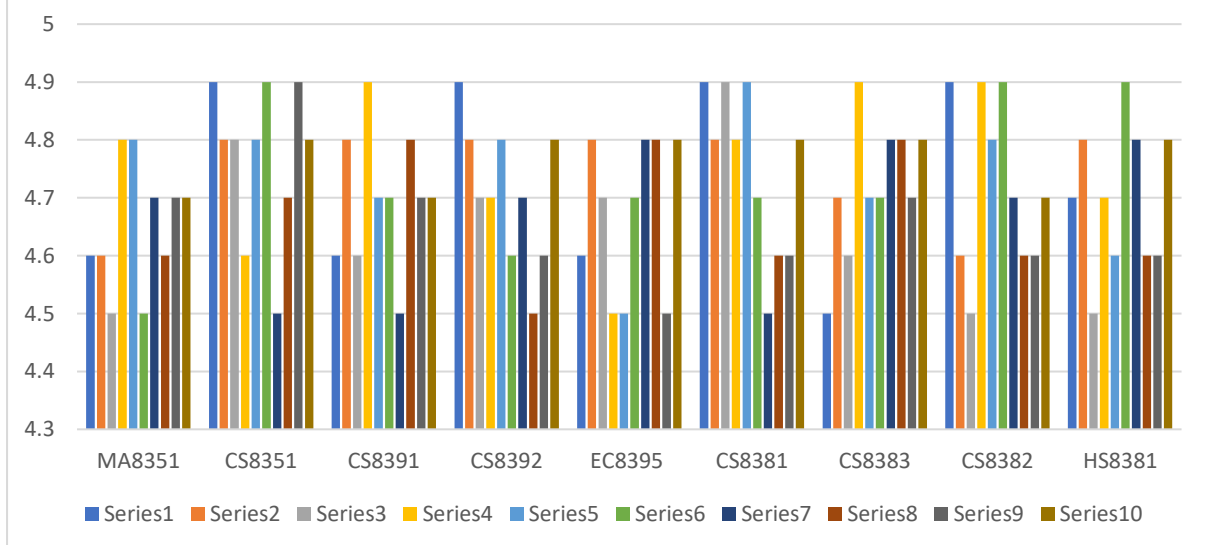
AALIM MUHAMMED SALEGH COLLEGE OF ENGINEERING



Approved by All India Council for Technical Education, New Delhi
 Affiliated to Anna University, Chennai
 NAAC Accredited Institution & NBA Accredited Courses (Mech. Engg., ECE, CSE, IT)
 "Nizara Educational Campus" Muthapudupet, Avadi-IAF, Chennai - 55.

STUDENTS FEEDBACK (ACADEMIC YEAR 2021-2022) : SEM 3

S · N o	PARAMETERS	Subject Code								
		M A8 35 1	CS 83 51	CS 83 91	CS 83 92	E C8 39 5	CS 83 81	CS 83 83	CS 83 82	H S8 38 1
1	Comes to the class on time	4.6	4.9	4.6	4.9	4.6	4.9	4.5	4.9	4.7
2	Comes Well Prepared for the class	4.6	4.8	4.8	4.8	4.8	4.8	4.7	4.6	4.8
3	Engages class regularly and maintains the discipline	4.5	4.8	4.6	4.7	4.7	4.9	4.6	4.5	4.5
4	Speak clearly and audibly, writes and draws legibly	4.8	4.6	4.9	4.7	4.5	4.8	4.9	4.9	4.7
5	Covers all the topics on time	4.8	4.8	4.7	4.8	4.5	4.9	4.7	4.8	4.6
6	Offers timely assistance and counseling to the students	4.5	4.9	4.7	4.6	4.7	4.7	4.7	4.9	4.9
7	Asks questions to promote interaction and reflective thinking	4.7	4.5	4.5	4.7	4.8	4.5	4.8	4.7	4.8
8	Explain clearly and effectively the concepts / principles with appropriate Examples	4.6	4.7	4.8	4.5	4.8	4.6	4.8	4.6	4.6
9	Encourages, compliments and praises the originality and creativity displayed by the students.	4.7	4.9	4.7	4.6	4.5	4.6	4.7	4.6	4.6
10	Is understanding and unbiased in dealing with the students	4.7	4.8	4.7	4.8	4.8	4.8	4.8	4.7	4.8




PRINCIPAL
AALIM MUHAMMED SALEGH
COLLEGE OF ENGINEERING



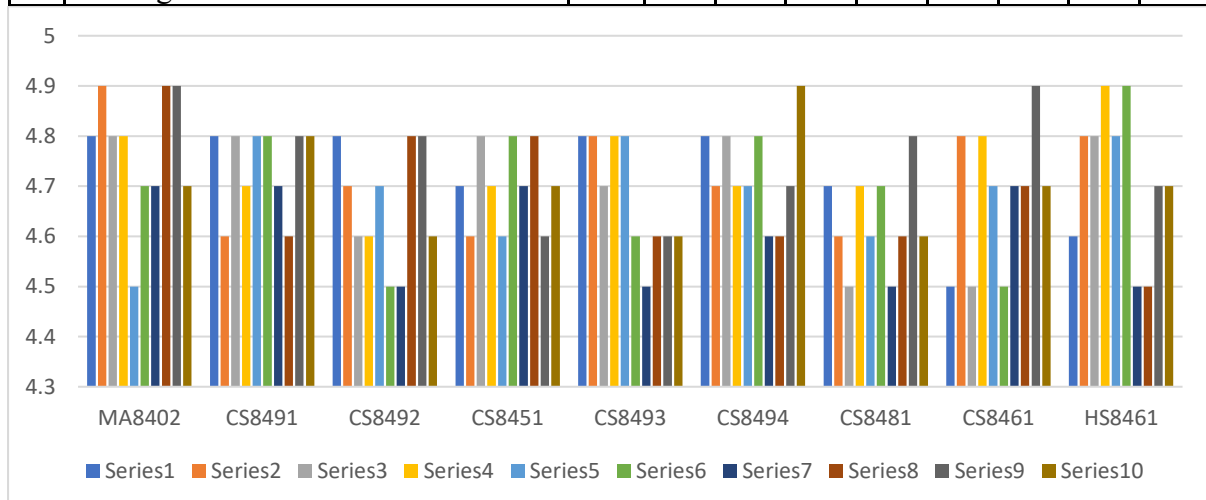
AALIM MUHAMMED SALEGH COLLEGE OF ENGINEERING



Approved by All India Council for Technical Education, New Delhi
 Affiliated to Anna University, Chennai
 NAAC Accredited Institution & NBA Accredited Courses (Mech. Engg., ECE, CSE, IT)
 "Nizara Educational Campus" Muthapudupet, Avadi-IAF, Chennai - 55.

STUDENTS FEEDBACK (ACADEMIC YEAR 2021-2022) : SEM 4

S. No	PARAMETERS	Subject Code								
		MA8402	CS8491	CS8492	CS8451	CS8493	CS8494	CS8481	CS8461	HS8461
1	Comes to the class on time	4.8	4.8	4.8	4.7	4.8	4.8	4.7	4.5	4.6
2	Comes Well Prepared for the class	4.9	4.6	4.7	4.6	4.8	4.7	4.6	4.8	4.8
3	Engages class regularly and maintains the discipline	4.8	4.8	4.6	4.8	4.7	4.8	4.5	4.5	4.8
4	Speak clearly and audibly, writes and draws legibly	4.8	4.7	4.6	4.7	4.8	4.7	4.7	4.8	4.9
5	Covers all the topics on time	4.5	4.8	4.7	4.6	4.8	4.7	4.6	4.7	4.8
6	Offers timely assistance and counseling to the students	4.7	4.8	4.5	4.8	4.6	4.8	4.7	4.5	4.9
7	Asks questions to promote interaction and reflective thinking	4.7	4.7	4.5	4.7	4.5	4.6	4.5	4.7	4.5
8	Explain clearly and effectively the concepts / principles with appropriate Examples	4.9	4.6	4.8	4.8	4.6	4.6	4.6	4.7	4.5
9	Encourages, compliments and praises the originality and creativity displayed by the students.	4.9	4.8	4.8	4.6	4.6	4.7	4.8	4.9	4.7
10	Is understanding and unbiased in dealing with the students	4.7	4.8	4.6	4.7	4.6	4.9	4.6	4.7	4.7




PRINCIPAL
AALIM MUHAMMED SALEGH
COLLEGE OF ENGINEERING



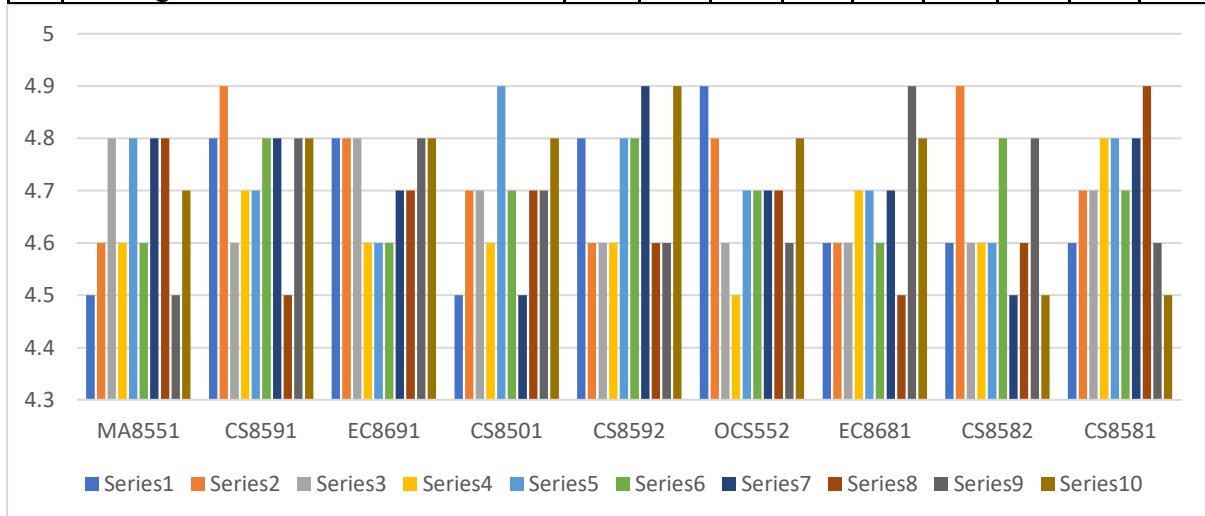
AALIM MUHAMMED SALEGH COLLEGE OF ENGINEERING



Approved by All India Council for Technical Education, New Delhi
 Affiliated to Anna University, Chennai
 NAAC Accredited Institution & NBA Accredited Courses (Mech. Engg., ECE, CSE, IT)
 "Nizara Educational Campus" Muthapudupet, Avadi-IAF, Chennai - 55.

STUDENTS FEEDBACK (ACADEMIC YEAR 2022-2023) : SEM 5

S · N o	PARAMETERS	Subject Code									
		M A8 55 1	CS 85 91	E C8 69 1	CS 85 01	CS 85 92	O CS 55 2	E C8 68 1	CS 85 82	CS 85 81	
1	Comes to the class on time	4.5	4.8	4.8	4.5	4.8	4.9	4.6	4.6	4.6	
2	Comes Well Prepared for the class	4.6	4.9	4.8	4.7	4.6	4.8	4.6	4.9	4.7	
3	Engages class regularly and maintains the discipline	4.8	4.6	4.8	4.7	4.6	4.6	4.6	4.6	4.7	
4	Speak clearly and audibly, writes and draws legibly	4.6	4.7	4.6	4.6	4.6	4.5	4.7	4.6	4.8	
5	Covers all the topics on time	4.8	4.7	4.6	4.9	4.8	4.7	4.7	4.6	4.8	
6	Offers timely assistance and counseling to the students	4.6	4.8	4.6	4.7	4.8	4.7	4.6	4.8	4.7	
7	Asks questions to promote interaction and reflective thinking	4.8	4.8	4.7	4.5	4.9	4.7	4.7	4.5	4.8	
8	Explain clearly and effectively the concepts / principles with appropriate Examples	4.8	4.5	4.7	4.7	4.6	4.7	4.5	4.6	4.9	
9	Encourages, compliments and praises the originality and creativity displayed by the students.	4.5	4.8	4.8	4.7	4.6	4.6	4.9	4.8	4.6	
10	Is understanding and unbiased in dealing with the students	4.7	4.8	4.8	4.8	4.9	4.8	4.8	4.5	4.5	




 PRINCIPAL
 AALIM MUHAMMED SALEGH
 COLLEGE OF ENGINEERING



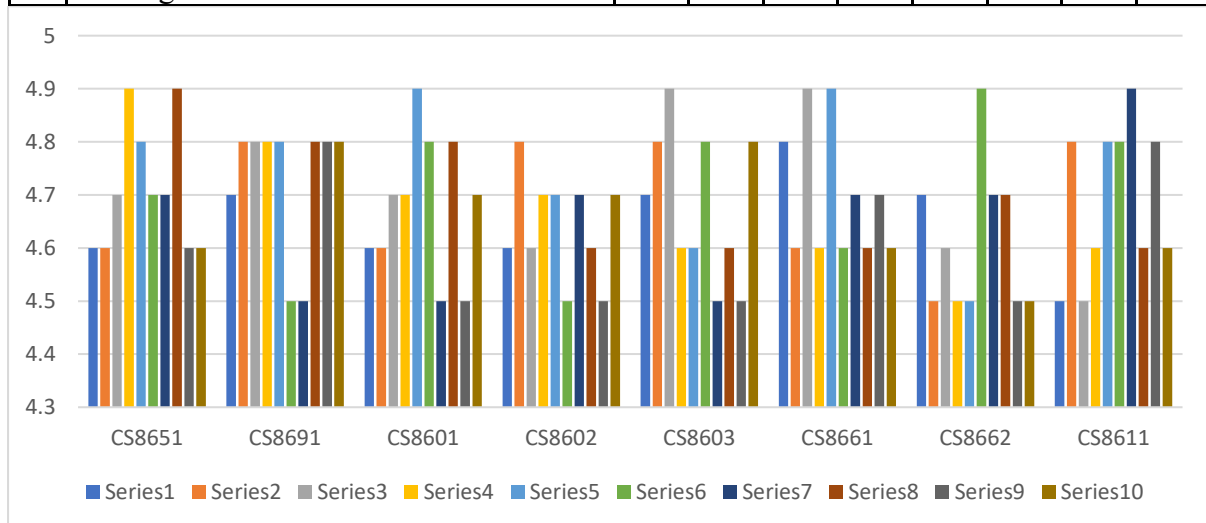
AALIM MUHAMMED SALEGH COLLEGE OF ENGINEERING



Approved by All India Council for Technical Education, New Delhi
 Affiliated to Anna University, Chennai
 NAAC Accredited Institution & NBA Accredited Courses (Mech. Engg., ECE, CSE, IT)
 "Nizara Educational Campus" Muthapudupet, Avadi-IAF, Chennai - 55.

STUDENTS FEEDBACK (ACADEMIC YEAR 2022-2023) : SEM 6

S. No	PARAMETERS	Subject Code							
		CS 86 51	CS 86 91	CS 86 01	CS 86 02	CS 86 03	CS 86 61	CS 86 62	CS 86 11
1	Comes to the class on time	4.6	4.7	4.6	4.6	4.7	4.8	4.7	4.5
2	Comes Well Prepared for the class	4.6	4.8	4.6	4.8	4.8	4.6	4.5	4.8
3	Engages class regularly and maintains the discipline	4.7	4.8	4.7	4.6	4.9	4.9	4.6	4.5
4	Speak clearly and audibly, writes and draws legibly	4.9	4.8	4.7	4.7	4.6	4.6	4.5	4.6
5	Covers all the topics on time	4.8	4.8	4.9	4.7	4.6	4.9	4.5	4.8
6	Offers timely assistance and counseling to the students	4.7	4.5	4.8	4.5	4.8	4.6	4.9	4.8
7	Asks questions to promote interaction and reflective thinking	4.7	4.5	4.5	4.7	4.5	4.7	4.7	4.9
8	Explain clearly and effectively the concepts / principles with appropriate Examples	4.9	4.8	4.8	4.6	4.6	4.6	4.7	4.6
9	Encourages, compliments and praises the originality and creativity displayed by the students.	4.6	4.8	4.5	4.5	4.5	4.7	4.5	4.8
10	Is understanding and unbiased in dealing with the students	4.6	4.8	4.7	4.7	4.8	4.6	4.5	4.6



PRINCIPAL
AALIM MUHAMMED SALEGH
COLLEGE OF ENGINEERING



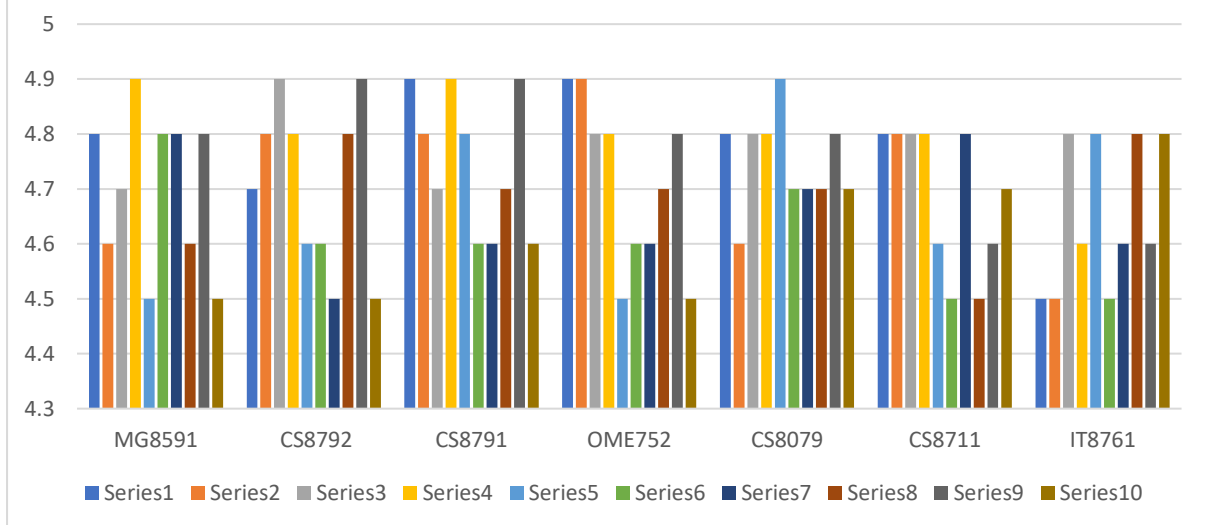
AALIM MUHAMMED SALEGH COLLEGE OF ENGINEERING



Approved by All India Council for Technical Education, New Delhi
 Affiliated to Anna University, Chennai
 NAAC Accredited Institution & NBA Accredited Courses (Mech. Engg., ECE, CSE, IT)
 "Nizara Educational Campus" Muthapudupet, Avadi-IAF, Chennai - 55.

STUDENTS FEEDBACK (ACADEMIC YEAR 2023-2024) : SEM 7

S. No	PARAMETERS	Subject Code						
		MG 859 1	CS 879 2	CS 879 1	OM E75 2	CS 807 9	CS 871 1	IT 87 61
1	Comes to the class on time	4.8	4.7	4.9	4.9	4.8	4.8	4.5
2	Comes Well Prepared for the class	4.6	4.8	4.8	4.9	4.6	4.8	4.5
3	Engages class regularly and maintains the discipline	4.7	4.9	4.7	4.8	4.8	4.8	4.8
4	Speak clearly and audibly, writes and draws legibly	4.9	4.8	4.9	4.8	4.8	4.8	4.6
5	Covers all the topics on time	4.5	4.6	4.8	4.5	4.9	4.6	4.8
6	Offers timely assistance and counseling to the students	4.8	4.6	4.6	4.6	4.7	4.5	4.5
7	Asks questions to promote interaction and reflective thinking	4.8	4.5	4.6	4.6	4.7	4.8	4.6
8	Explain clearly and effectively the concepts / principles with appropriate Examples	4.6	4.8	4.7	4.7	4.7	4.5	4.8
9	Encourages, compliments and praises the originality and creativity displayed by the students.	4.8	4.9	4.9	4.8	4.8	4.6	4.6
10	Is understanding and unbiased in dealing with the students	4.5	4.5	4.6	4.5	4.7	4.7	4.8



(Signature)
 PRINCIPAL
 AALIM MUHAMMED SALEGH
 COLLEGE OF ENGINEERING



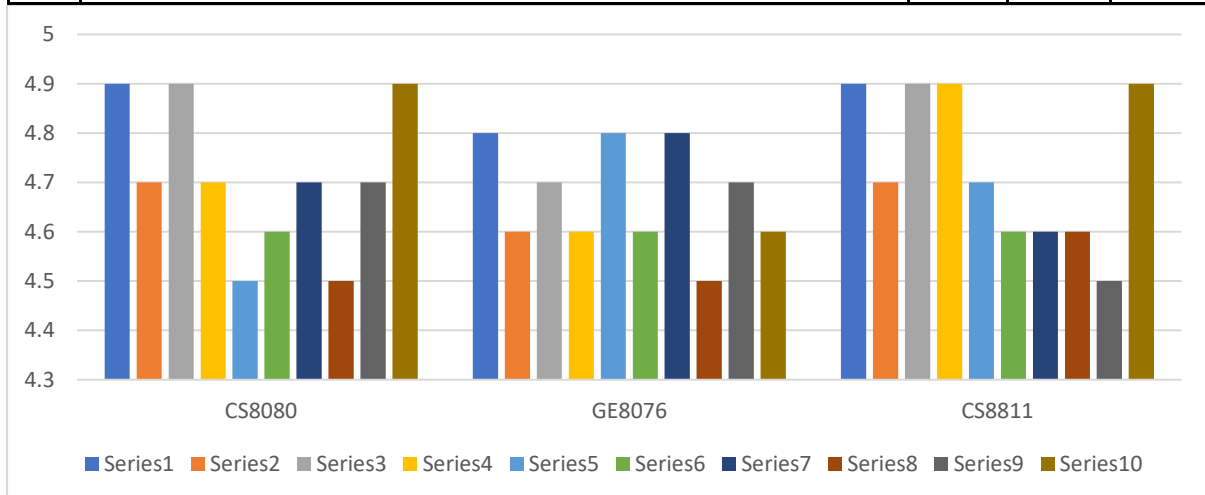
AALIM MUHAMMED SALEGH COLLEGE OF ENGINEERING



Approved by All India Council for Technical Education, New Delhi
 Affiliated to Anna University, Chennai
 NAAC Accredited Institution & NBA Accredited Courses (Mech. Engg., ECE, CSE, IT)
 "Nizara Educational Campus" Muthapudupet, Avadi-IAF, Chennai - 55.

STUDENTS FEEDBACK (ACADEMIC YEAR 2023-2024) : SEM 8

S. No	PARAMETERS	Subject Code		
		CS8 080	GE8 076	CS8 811
1	Comes to the class on time	4.9	4.8	4.9
2	Comes Well Prepared for the class	4.7	4.6	4.7
3	Engages class regularly and maintains the discipline	4.9	4.7	4.9
4	Speak clearly and audibly, writes and draws legibly	4.7	4.6	4.9
5	Covers all the topics on time	4.5	4.8	4.7
6	Offers timely assistance and counseling to the students	4.6	4.6	4.6
7	Asks questions to promote interaction and reflective thinking	4.7	4.8	4.6
8	Explain clearly and effectively the concepts / principles with appropriate Examples	4.5	4.5	4.6
9	Encourages, compliments and praises the originality and creativity displayed by the students.	4.7	4.7	4.5
10	Is understanding and unbiased in dealing with the students	4.9	4.6	4.9



[Signature]
 PRINCIPAL
 AALIM MUHAMMED SALEGH
 COLLEGE OF ENGINEERING



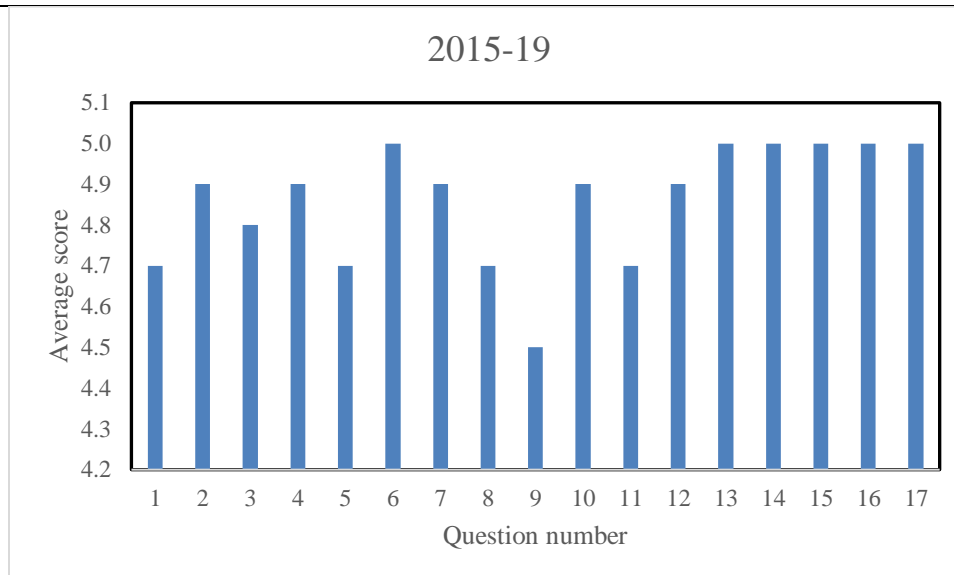
AALIM MUHAMMED SALEGH COLLEGE OF ENGINEERING



Approved by All India Council for Technical Education, New Delhi
 Affiliated to Anna University, Chennai
 NAAC Accredited Institution & NBA Accredited Courses (Mech. Engg., ECE, CSE, IT)
 "Nizara Educational Campus" Muthapudupet, Avadi-IAF, Chennai - 55.

ALUMINI FEEDBACK (ACADEMIC YEAR 2018-2019)

ALUMINI FEEDBACK ANALYSIS		
S.No	Questions	2015-19
1	How do you rate your learning proces at college?	4.7
2	Technical knowledge obtained during your period of study.	4.9
3	How do you rate the teaching process in the Institution?	4.8
4	How do you rate the Extra-curricular activities in the Institution?	4.9
5	How do you rate the co-curricular activities in the institution?	4.7
6	Faculty -Student interaction.	5.0
7	Overall discipline	4.9
8	your Opinion about placement and training.	4.7
9	Transport availability during your studies.	4.5
10	Hostel Facilities	4.9
11	How do you rate the relevance of the training given in the college to your present job?	4.7
12	Counseling and Guidance provided for the students.	4.9
13	How do you rate the facilities provided in the institution?	5.0
14	Laboratories / Equipments	5.0
15	Library	5.0
16	Computers/Internet	5.0
17	Overall assessment	5.0
Average:		4.9




PRINCIPAL
AALIM MUHAMMED SALEGH
COLLEGE OF ENGINEERING



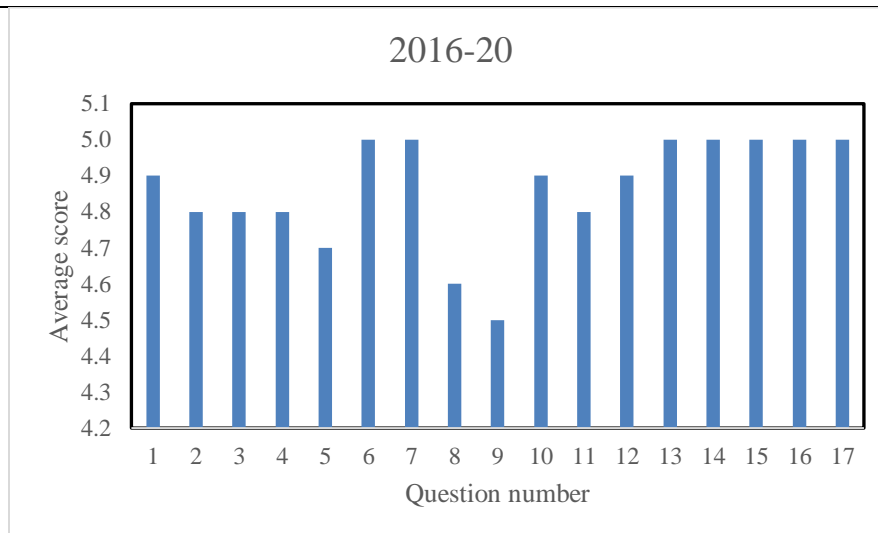
AALIM MUHAMMED SALEGH COLLEGE OF ENGINEERING



Approved by All India Council for Technical Education, New Delhi
 Affiliated to Anna University, Chennai
 NAAC Accredited Institution & NBA Accredited Courses (Mech. Engg., ECE, CSE, IT)
 "Nizara Educational Campus" Muthapudupet, Avadi-IAF, Chennai - 55.

ALUMINI FEEDBACK (ACADEMIC YEAR 2019-2020)

ALUMINI FEEDBACK ANALYSIS		
S.No	Questions	2016-20
1	How do you rate your learning proces at college?	4.9
2	Technical knowledge obtained during your period of study.	4.8
3	How do you rate the teaching process in the Institution?	4.8
4	How do you rate the Extra-curricular activities in the Institution?	4.8
5	How do you rate the co-curricular activities in the institution?	4.7
6	Faculty -Student interaction.	5.0
7	Overall discipline	5.0
8	your Opinion about placement and training.	4.6
9	Transport availability during your studies.	4.5
10	Hostel Facilities	4.9
11	How do you rate the relevance of the training given in the college to your present job?	4.8
12	Counseling and Guidance provided for the students.	4.9
13	How do you rate the facilities provided in the institution?	5.0
14	Laboratories / Equipments	5.0
15	Library	5.0
16	Computers/Internet	5.0
17	Overall assessment	5.0
		Average: 4.9




PRINCIPAL
 AALIM MUHAMMED SALEGH
 COLLEGE OF ENGINEERING



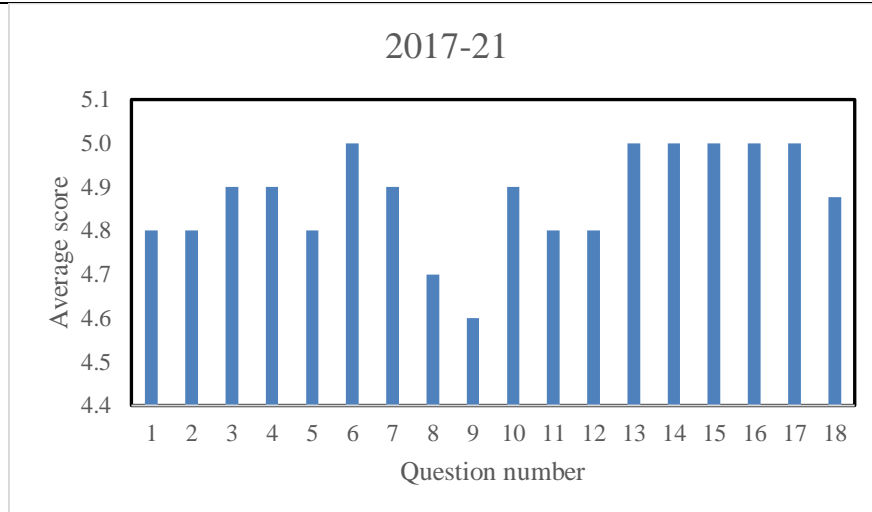
AALIM MUHAMMED SALEGH COLLEGE OF ENGINEERING



Approved by All India Council for Technical Education, New Delhi
 Affiliated to Anna University, Chennai
 NAAC Accredited Institution & NBA Accredited Courses (Mech. Engg., ECE, CSE, IT)
 "Nizara Educational Campus" Muthapudupet, Avadi-IAF, Chennai - 55.

ALUMINI FEEDBACK (ACADEMIC YEAR 2020-2021)

ALUMNI FEEDBACK ANALYSIS		
S.No	Questions	2017-21
1	How do you rate your learning proces at college?	4.8
2	Technical knowledge obtained during your period of study.	4.8
3	How do you rate the teaching process in the Institution?	4.9
4	How do you rate the Extra-curricular activities in the Institution?	4.9
5	How do you rate the co-curricular activities in the institution?	4.8
6	Faculty -Student interaction.	5.0
7	Overall discipline	4.9
8	your Opinion about placement and training.	4.7
9	Transport availability during your studies.	4.6
10	Hostel Facilities	4.9
11	How do you rate the relevance of the training given in the college to your present job?	4.8
12	Counseling and Guidance provided for the students.	4.8
13	How do you rate the facilities provided in the institution?	5.0
14	Laboratories / Equipments	5.0
15	Library	5.0
16	Computers/Internet	5.0
17	Overall assesment	5.0
		Average: 4.9




 PRINCIPAL
 AALIM MUHAMMED SALEGH
 COLLEGE OF ENGINEERING



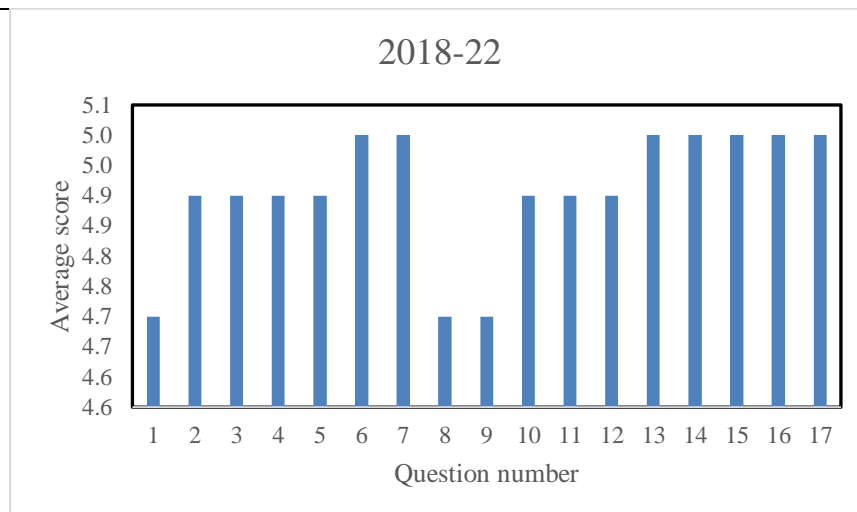
AALIM MUHAMMED SALEGH COLLEGE OF ENGINEERING



Approved by All India Council for Technical Education, New Delhi
 Affiliated to Anna University, Chennai
 NAAC Accredited Institution & NBA Accredited Courses (Mech. Engg., ECE, CSE, IT)
 "Nizara Educational Campus" Muthapudupet, Avadi-IAF, Chennai - 55.

ALUMINI FEEDBACK (ACADEMIC YEAR 2021-2022)

ALUMINI FEEDBACK ANALYSIS		
S.No	Questions	2018-22
1	How do you rate your learning proces at college?	4.7
2	Technical knowledge obtained during your period of study.	4.9
3	How do you rate the teaching process in the Institution?	4.9
4	How do you rate the Extra-curricular activities in the Institution?	4.9
5	How do you rate the co-curricular activities in the institution?	4.9
6	Faculty -Student interaction.	5.0
7	Overall discipline	5.0
8	your Opinion about placement and training.	4.7
9	Transport availability during your studies.	4.7
10	Hostel Facilities	4.9
11	How do you rate the relevance of the training given in the college to your present job?	4.9
12	Counseling and Guidance provided for the students.	4.9
13	How do you rate the facilities provided in the institution?	5.0
14	Laboratories / Equipments	5.0
15	Library	5.0
16	Computers/Internet	5.0
17	Overall assessment	5.0
		Average: 4.9



(Signature)
 PRINCIPAL
 AALIM MUHAMMED SALEGH
 COLLEGE OF ENGINEERING



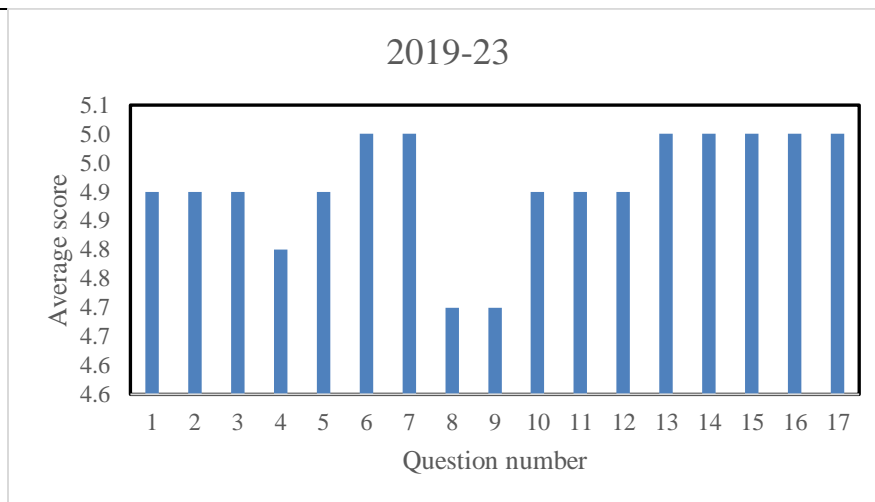
AALIM MUHAMMED SALEGH COLLEGE OF ENGINEERING



Approved by All India Council for Technical Education, New Delhi
 Affiliated to Anna University, Chennai
 NAAC Accredited Institution & NBA Accredited Courses (Mech. Engg., ECE, CSE, IT)
 "Nizara Educational Campus" Muthapudupet, Avadi-IAF, Chennai - 55.

ALUMINI FEEDBACK (ACADEMIC YEAR 2022-2023)

ALUMNI FEEDBACK ANALYSIS		
S.No	Questions	2019-23
1	How do you rate your learning proces at college?	4.9
2	Technical knowledge obtained during your period of study.	4.9
3	How do you rate the teaching process in the Institution?	4.9
4	How do you rate the Extra-curricular activities in the Institution?	4.8
5	How do you rate the co-curricular activities in the institution?	4.9
6	Faculty -Student interaction.	5.0
7	Overall discipline	5.0
8	your Opinion about placement and training.	4.7
9	Transport availability during your studies.	4.7
10	Hostel Facilities	4.9
11	How do you rate the relevance of the training given in the college to your present job?	4.9
12	Counseling and Guidance provided for the students.	4.9
13	How do you rate the facilities provided in the institution?	5.0
14	Laboratories / Equipments	5.0
15	Library	5.0
16	Computers/Internet	5.0
17	Overall assessment	5.0
		Average:
		4.9




PRINCIPAL
AALIM MUHAMMED SALEGH
COLLEGE OF ENGINEERING



AALIM MUHAMMED SALEGH COLLEGE OF ENGINEERING

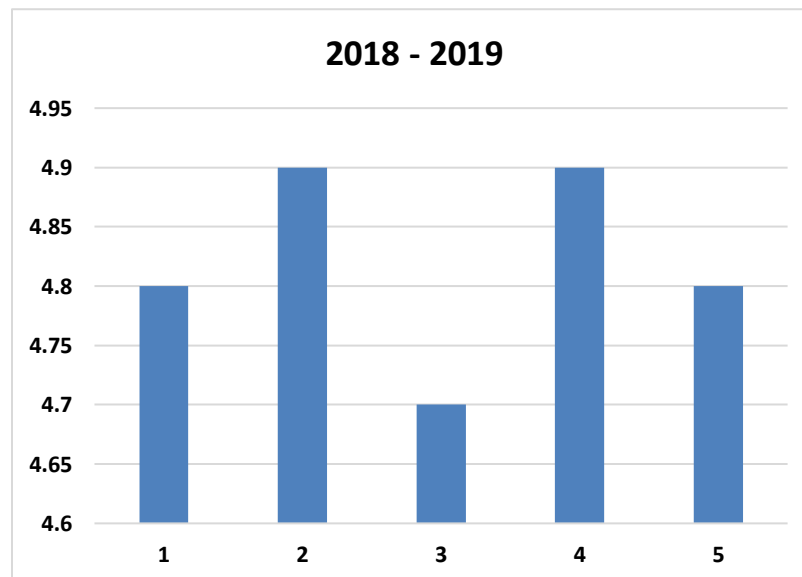


Approved by All India Council for Technical Education, New Delhi
Affiliated to Anna University, Chennai

NAAC Accredited Institution & NBA Accredited Courses (Mech. Engg., ECE, CSE, IT)
"Nizara Educational Campus" Muthapudupet, Avadi-IAF, Chennai - 55.

PARENT FEEDBACK (ACADEMIC YEAR 2018-2019)

S.No	PARAMETERS	RATING
1	Cleanliness, ambience and security arrangements in the college campus	4.8
2	Facilities Provided by the college (Laboratory / Library / Hostel / Transport)	4.9
3	The Quality of teaching offered by the college	4.7
4	Examination system adapted by the college.	4.9
5	Students involvement in Social activities	4.8




PRINCIPAL
AALIM MUHAMMED SALEGH
COLLEGE OF ENGINEERING



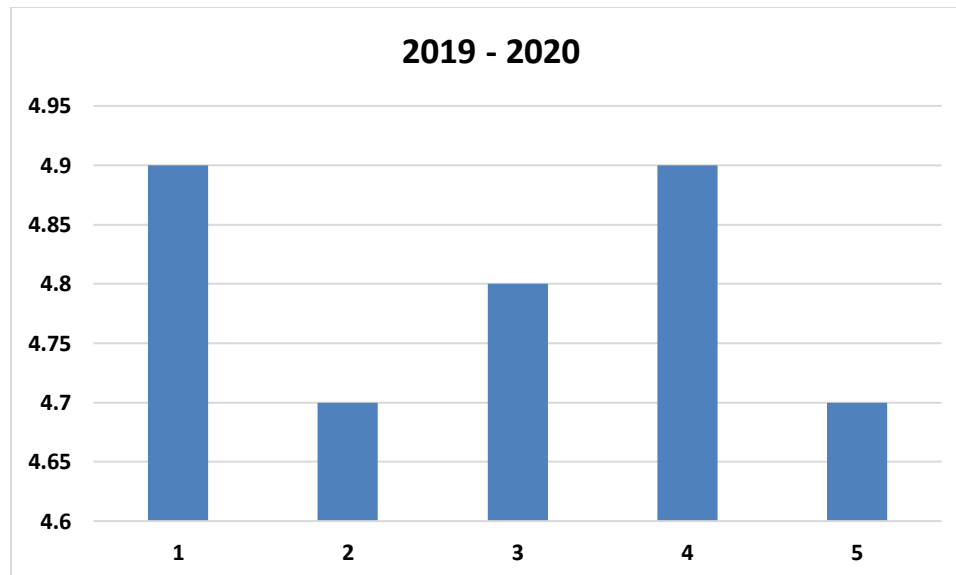
AALIM MUHAMMED SALEGH COLLEGE OF ENGINEERING



Approved by All India Council for Technical Education, New Delhi
Affiliated to Anna University, Chennai
NAAC Accredited Institution & NBA Accredited Courses (Mech. Engg., ECE, CSE, IT)
"Nizara Educational Campus" Muthapudupet, Avadi-IAF, Chennai - 55.

PARENT FEEDBACK (ACADEMIC YEAR 2019-2020)

S.No	PARAMETERS	RATING
1	Cleanliness, ambience and security arrangements in the college campus	4.9
2	Facilities Provided by the college (Laboratory / Library / Hostel / Transport)	4.7
3	The Quality of teaching offered by the college	4.8
4	Examination system adapted by the college.	4.9
5	Students involvement in Social activities	4.7




PRINCIPAL
AALIM MUHAMMED SALEGH
COLLEGE OF ENGINEERING



AALIM MUHAMMED SALEGH COLLEGE OF ENGINEERING

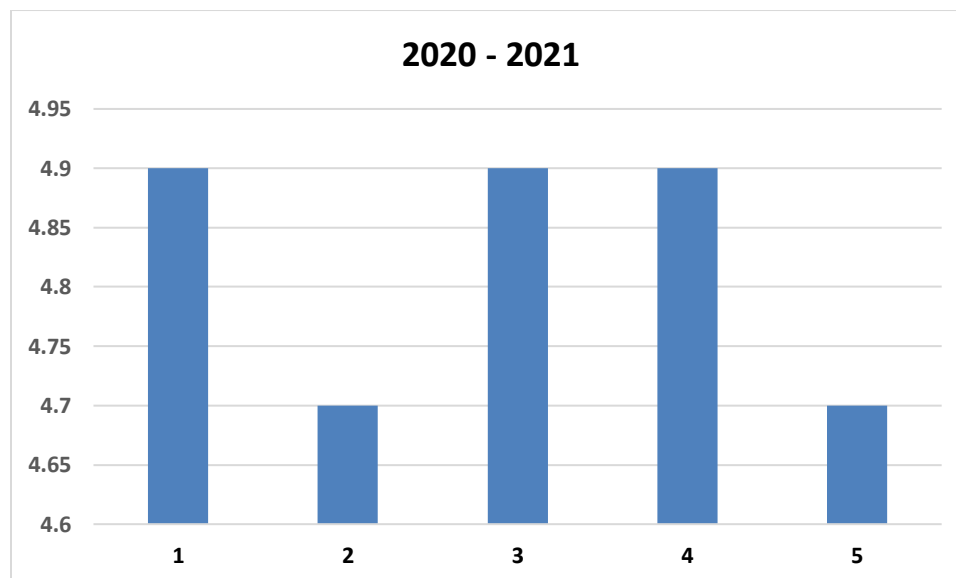


Approved by All India Council for Technical Education, New Delhi
Affiliated to Anna University, Chennai

NAAC Accredited Institution & NBA Accredited Courses (Mech. Engg., ECE, CSE, IT)
"Nizara Educational Campus" Muthapudupet, Avadi-IAF, Chennai - 55.

PARENT FEEDBACK (ACADEMIC YEAR 2020-2021)

S.No	PARAMETERS	RATING
1	Cleanliness, ambience and security arrangements in the college campus	4.9
2	Facilities Provided by the college (Laboratory / Library / Hostel / Transport)	4.7
3	The Quality of teaching offered by the college	4.9
4	Examination system adapted by the college.	4.9
5	Students involvement in Social activities	4.7




PRINCIPAL
AALIM MUHAMMED SALEGH
COLLEGE OF ENGINEERING



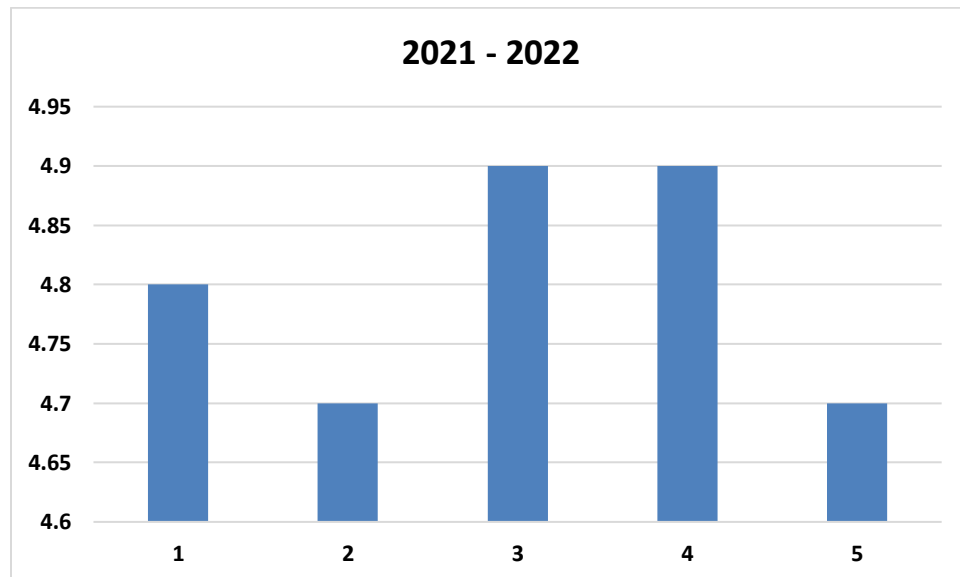
AALIM MUHAMMED SALEGH COLLEGE OF ENGINEERING



Approved by All India Council for Technical Education, New Delhi
Affiliated to Anna University, Chennai
NAAC Accredited Institution & NBA Accredited Courses (Mech. Engg., ECE, CSE, IT)
"Nizara Educational Campus" Muthapudupet, Avadi-IAF, Chennai - 55.

PARENT FEEDBACK (ACADEMIC YEAR 2021-2022)

S.No	PARAMETERS	RATING
1	Cleanliness, ambience and security arrangements in the college campus	4.8
2	Facilities Provided by the college (Laboratory / Library / Hostel / Transport)	4.7
3	The Quality of teaching offered by the college	4.9
4	Examination system adapted by the college.	4.9
5	Students involvement in Social activities	4.7




PRINCIPAL
AALIM MUHAMMED SALEGH
COLLEGE OF ENGINEERING



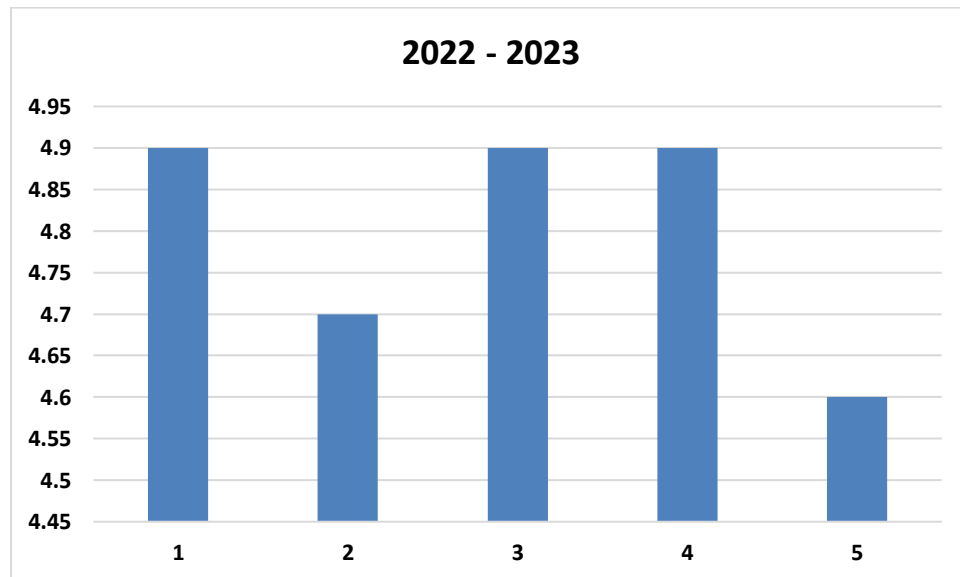
AALIM MUHAMMED SALEGH COLLEGE OF ENGINEERING



Approved by All India Council for Technical Education, New Delhi
Affiliated to Anna University, Chennai
NAAC Accredited Institution & NBA Accredited Courses (Mech. Engg., ECE, CSE, IT)
"Nizara Educational Campus" Muthapudupet, Avadi-IAF, Chennai - 55.

PARENT FEEDBACK (ACADEMIC YEAR 2022-2023)

S.No	PARAMETERS	RATING
1	Cleanliness, ambience and security arrangements in the college campus	4.9
2	Facilities Provided by the college (Laboratory / Library / Hostel / Transport)	4.7
3	The Quality of teaching offered by the college	4.9
4	Examination system adapted by the college.	4.9
5	Students involvement in Social activities	4.6




PRINCIPAL
AALIM MUHAMMED SALEGH
COLLEGE OF ENGINEERING

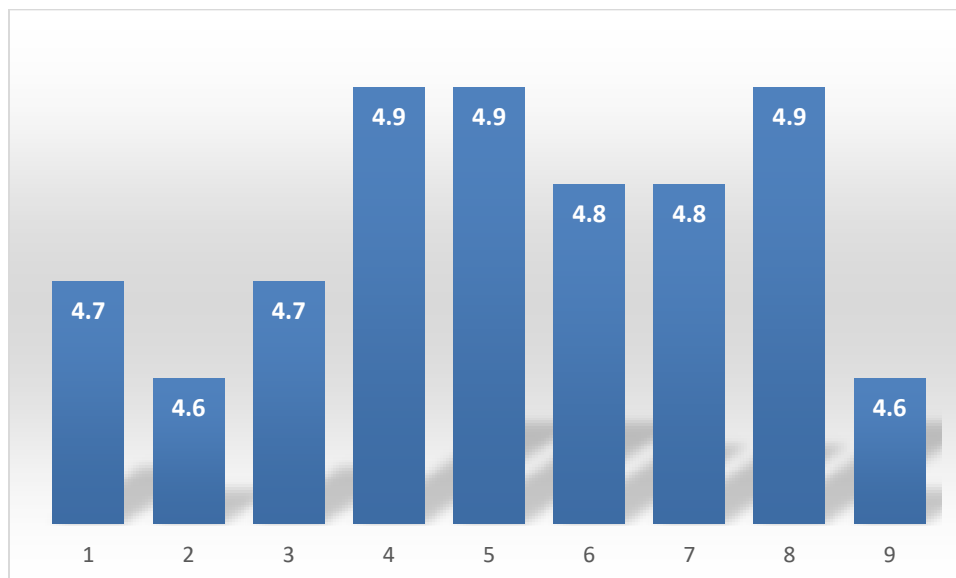


**AALIM MUHAMMED SALEGH
COLLEGE OF ENGINEERING
AVADI - IAF, CHENNAI-55**



**DEPARTMENT OF COMPUTER SCIENCE AND ENGINEERING
EMPLOYER FEEDBACK ANALYSIS
Academic year 2018-2019**

S.No	Questions	Rating
1	Views on Strengths of our graduates	4.7
2	How do you find our students in applying the knowledge of maths, science in the solution of complying engineering problems?	4.6
3	How you found your students with respect to technical skills?	4.7
4	How are you rate our students with respect to their ethical and moral values?	4.9
5	How you rate our students with respect to work?	4.9
6	Were you happy with the support you received from the college during placement drive?	4.8
7	How you rate our students with respect to communication skills?	4.8
8	How you rate our students with respect to being open to new ideas and learning new technologies?	4.9
9	How do you rate our student with respect to overall performance in terms of percentage contribution to your organisation?	4.6




**PRINCIPAL
AALIM MUHAMMED SALEGH
COLLEGE OF ENGINEERING**



AALIM MUHAMMED SALEGH COLLEGE OF ENGINEERING

AVADI - IAF, CHENNAI-55

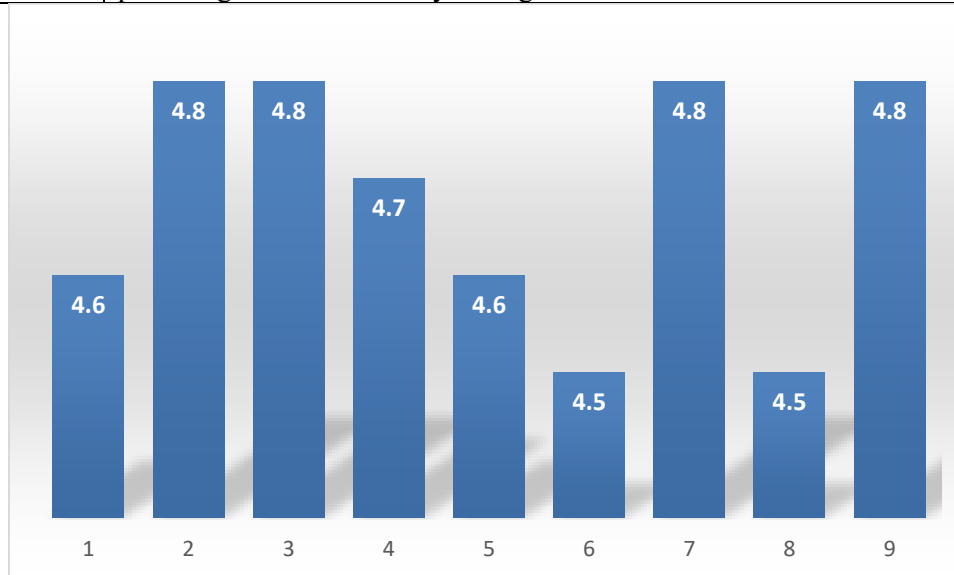


DEPARTMENT OF COMPUTER SCIENCE AND ENGINEERING

EMPLOYER FEEDBACK ANALYSIS

Academic year 2019-2020

S.No	Questions	Rating
1	Views on Strengths of our graduates	4.6
2	How do you find our students in applying the knowledge of maths, science in the solution of complying engineering problems?	4.8
3	How you found your students with respect to technical skills?	4.8
4	How are you rate our students with respect to their ethical and moral values?	4.7
5	How you rate our students with respect to work?	4.6
6	Were you happy with the support you received from the college during placement drive?	4.5
7	How you rate our students with respect to communication skills?	4.8
8	How you rate our students with respect to being open to new ideas and learning new technologies?	4.5
9	How do you rate our student with respect to overall performance in terms of percentage contribution to your organisation?	4.8




PRINCIPAL
AALIM MUHAMMED SALEGH
COLLEGE OF ENGINEERING



**AALIM MUHAMMED SALEGH
COLLEGE OF ENGINEERING**

AVADI - IAF, CHENNAI-55

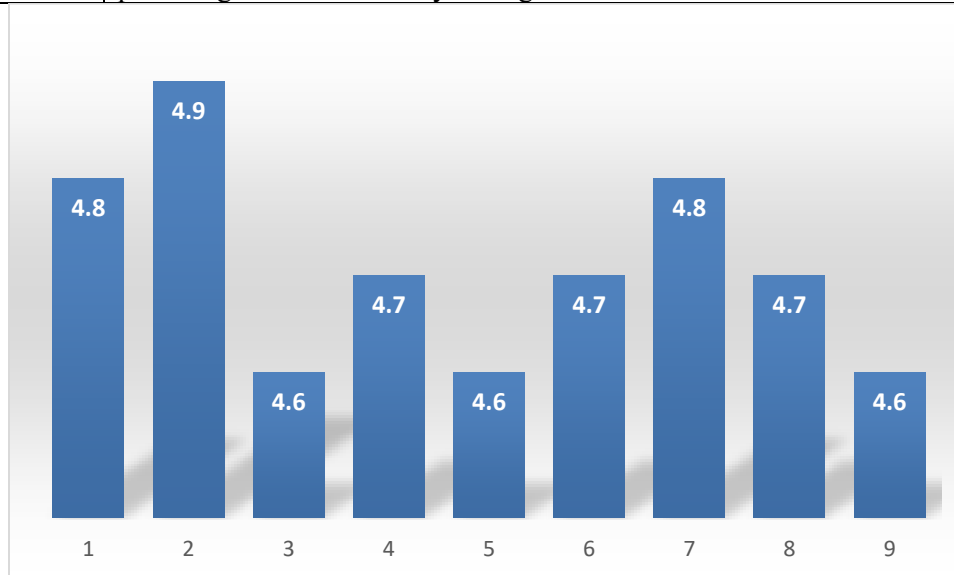


DEPARTMENT OF COMPUTER SCIENCE AND ENGINEERING

EMPLOYER FEEDBACK ANALYSIS

Academic year 2020-2021

S.No	Questions	Rating
1	Views on Strengths of our graduates	4.8
2	How do you find our students in applying the knowledge of maths, science in the solution of complying engineering problems?	4.9
3	How you found your students with respect to technical skills?	4.6
4	How are you rate our students with respect to their ethical and moral values?	4.7
5	How you rate our students with respect to work?	4.6
6	Were you happy with the support you received from the college during placement drive?	4.7
7	How you rate our students with respect to communication skills?	4.8
8	How you rate our students with respect to being open to new ideas and learning new technologies?	4.7
9	How do you rate our student with respect to overall performance in terms of percentage contribution to your organisation?	4.6




**PRINCIPAL
AALIM MUHAMMED SALEGH
COLLEGE OF ENGINEERING**

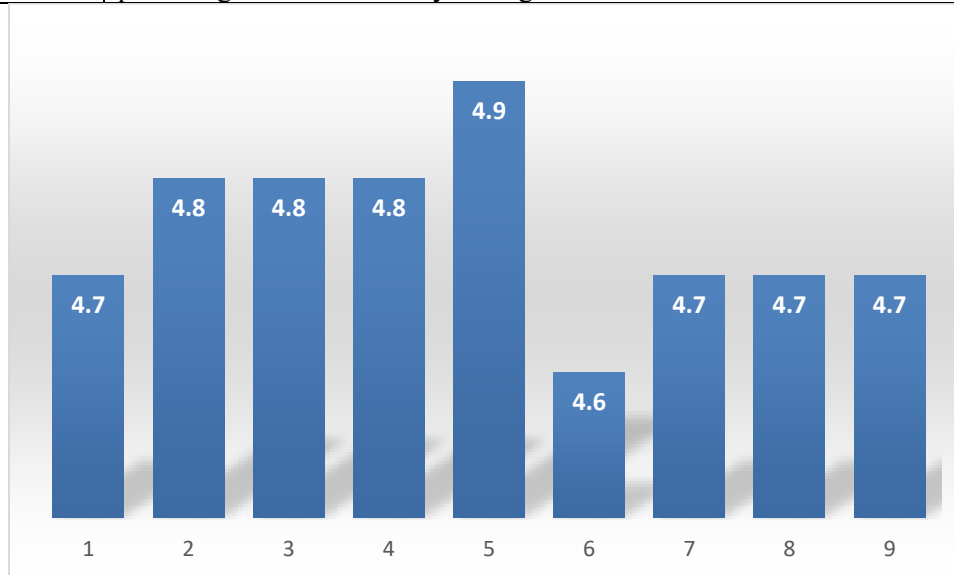


**AALIM MUHAMMED SALEGH
COLLEGE OF ENGINEERING
AVADI - IAF, CHENNAI-55**



**DEPARTMENT OF COMPUTER SCIENCE AND ENGINEERING
EMPLOYER FEEDBACK ANALYSIS
Academic year 2021-2022**

S.No	Questions	Rating
1	Views on Strengths of our graduates	4.7
2	How do you find our students in applying the knowledge of maths, science in the solution of complying engineering problems?	4.8
3	How you found your students with respect to technical skills?	4.8
4	How are you rate our students with respect to their ethical and moral values?	4.8
5	How you rate our students with respect to work?	4.9
6	Were you happy with the support you received from the college during placement drive?	4.6
7	How you rate our students with respect to communication skills?	4.7
8	How you rate our students with respect to being open to new ideas and learning new technologies?	4.7
9	How do you rate our student with respect to overall performance in terms of percentage contribution to your organisation?	4.7




**PRINCIPAL
AALIM MUHAMMED SALEGH
COLLEGE OF ENGINEERING**

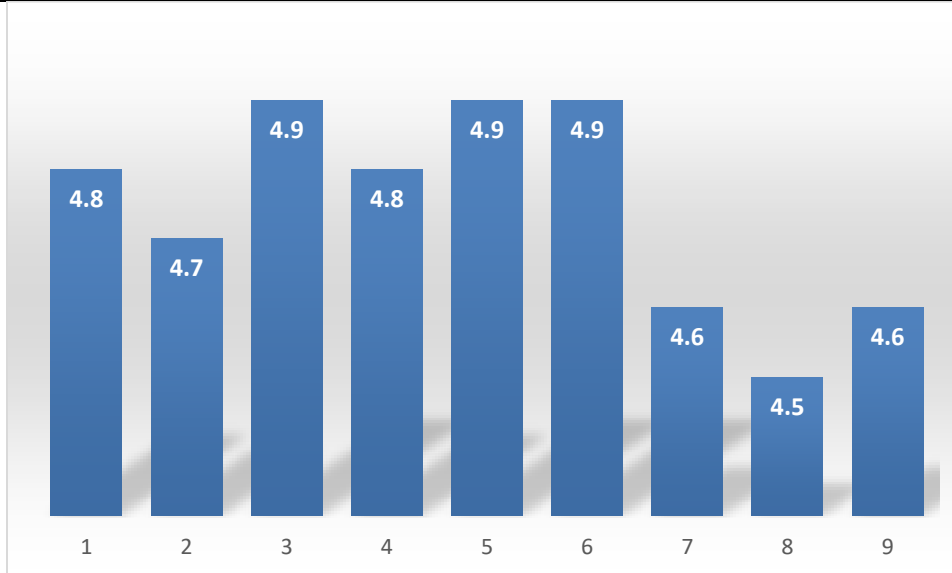


**AALIM MUHAMMED SALEGH
COLLEGE OF ENGINEERING
AVADI - IAF, CHENNAI-55**



**DEPARTMENT OF COMPUTER SCIENCE AND ENGINEERING
EMPLOYER FEEDBACK ANALYSIS
Academic year 2022-2023**

S.No	Questions	Rating
1	Views on Strengths of our graduates	4.8
2	How do you find our students in applying the knowledge of maths, science in the solution of complying engineering problems?	4.7
3	How you found your students with respect to technical skills?	4.9
4	How are you rate our students with respect to their ethical and moral values?	4.8
5	How you rate our students with respect to work?	4.9
6	Were you happy with the support you received from the college during placement drive?	4.9
7	How you rate our students with respect to communication skills?	4.6
8	How you rate our students with respect to being open to new ideas and learning new technologies?	4.5
9	How do you rate our student with respect to overall performance in terms of percentage contribution to your organisation?	4.6




**PRINCIPAL
AALIM MUHAMMED SALEGH
COLLEGE OF ENGINEERING**



AALIM MUHAMMED SALEGH COLLEGE OF ENGINEERING



Approved by All India Council for Technical Education, New Delhi
Affiliated to Anna University, Chennai
NAAC Accredited Institution & NBA Accredited Courses (Mech. Engg., ECE, CSE, IT)
"Nizara Educational Campus" Muthapudupet, Avadi-IAF, Chennai - 55.

ANALYSIS REPORT (2018 - 2019)

ANALYSIS OF PROGRAMME FEEDBACK BY STUDENTS

After reviewing student feedback for the academic year 2018-2019, several positive points were noted:

1. Students expressed high levels of satisfaction with the content and depth of the program syllabus.
2. Majority of students expressed satisfaction with the career orientation programs included in the syllabus.
3. Syllabus was perceived as engaging and well-structured, particularly regarding the distribution of class hours.
4. Students appreciated the skill-oriented teaching methods utilized by the institute and the abundant learning resources available in the library.

ANALYSIS OF PROGRAMME FEEDBACK BY ALUMNI

After reviewing parents' feedback for the academic year 2018-2019, the following positive points were noted:


1. Most of the students expressed their satisfaction with resources provided by the institution and Faculty interaction.
2. The Majority of the students are satisfied with the importance given to curricular and extracurricular activities.

ANALYSIS OF PROGRAMME FEEDBACK BY TEACHERS

After reviewing teachers' feedback for the academic year 2018-2019, several key points were noted:

1. Majority of teachers affirmed that the program structure, as well as the available infrastructure and teaching aids at the institute, is suitable.
2. Likewise, most of the teachers expressed confidence that updating the course structure with the latest skills prepares students for future job placements.

These insights from the teachers emphasize their favourable views on the program's structure, the institution's resources, highlighting a supportive environment for both students and educators.


PRINCIPAL
AALIM MUHAMMED SALEGH
COLLEGE OF ENGINEERING
AVADI - IAF, MUTHAPUDUPET
CHENNAI 600 055





AALIM MUHAMMED SALEGH COLLEGE OF ENGINEERING



Approved by All India Council for Technical Education, New Delhi
Affiliated to Anna University, Chennai

NAAC Accredited Institution & NBA Accredited Courses (Mech. Engg., ECE, CSE, IT)
"Nizara Educational Campus" Muthapudupet, Avadi-IAF, Chennai - 55.

ANALYSIS REPORT (2018 - 2019)

ANALYSIS OF PROGRAMME FEEDBACK BY PARENTS

After analysing parents' feedback for the academic year 2018-2019, several key points were noted:

1. Most of the parents were very much satisfied with the quality of teaching and examination pattern.
2. About 90% of the parents expressed their satisfaction with the facilities provided by the institution.

ANALYSIS OF PROGRAMME FEEDBACK BY EMPLOYERS

After reviewing employer feedback for the academic year 2018-2019, the below point was noted:

1. Employers expressed their satisfaction on technical and communication skills of our students.

Md
PRINCIPAL
AALIM MUHAMMED SALEGH
COLLEGE OF ENGINEERING
AVADI - IAF, MUTHAPUDUPE
CHENNAI 600 055





AALIM MUHAMMED SALEGH COLLEGE OF ENGINEERING

Approved by All India Council for Technical Education, New Delhi
Affiliated to Anna University, Chennai
NAAC Accredited Institution & NBA Accredited Courses (Mech. Engg., ECE, CSE, IT)
"Nizara Educational Campus" Muthapudupet, Avadi-IAF, Chennai - 55.



ANALYSIS REPORT (2019 - 2020)

ANALYSIS OF PROGRAMME FEEDBACK BY STUDENTS

After reviewing student feedback for the academic year 2019-2020, several positive points were noted:

1. Students reported a high degree of satisfaction with the content and depth of the program syllabus.
2. The majority of students expressed contentment with the career orientation programs integrated into the syllabus.
3. The syllabus was viewed as engaging and well-organized, especially in terms of class hour distribution.
4. Students valued the skill-oriented teaching methods employed by the institute and the extensive learning resources available in the library.

ANALYSIS OF PROGRAMME FEEDBACK BY ALUMNI

After reviewing parents' feedback for the academic year 2019-2020, the following positive points were noted:


1. Most students expressed their satisfaction with the resources provided by the institution and the interactions with faculty.
2. The majority of students are pleased with the emphasis placed on curricular and extracurricular activities.

ANALYSIS OF PROGRAMME FEEDBACK BY TEACHERS

After reviewing teachers' feedback for the academic year 2019-2020, several key points were noted:

1. The majority of teachers confirmed that the program structure, along with the available infrastructure and available teaching aids in the institute is appropriate.
2. Similarly, most teachers expressed confidence that updating the course structure with the latest skills equips students for future job placements.

These insights reflect the teachers' positive opinions about the program's structure and the institution's resources, underscoring a supportive environment for both students and educators.


PRINCIPAL
AALIM MUHAMMED SALEGH
COLLEGE OF ENGINEERING
AVADI - IAF, MUTHAPUDUPE
CHENNAI 600 055





AALIM MUHAMMED SALEGH COLLEGE OF ENGINEERING



Approved by All India Council for Technical Education, New Delhi
Affiliated to Anna University, Chennai
NAAC Accredited Institution & NBA Accredited Courses (Mech. Engg., ECE, CSE, IT)
"Nizara Educational Campus" Muthapudupet, Avadi-IAF, Chennai - 55.

ANALYSIS REPORT (2019 - 2020)

ANALYSIS OF PROGRAMME FEEDBACK BY PARENTS

After analysing parents' feedback for the academic year 2019-2020, several key points were noted:

1. Most parents were highly satisfied with the quality of teaching and the examination format.
2. Approximately 90% of parents reported being pleased with the facilities offered by the institution.

ANALYSIS OF PROGRAMME FEEDBACK BY EMPLOYERS

After reviewing employer feedback for the academic year 2019-2020, the below point was noted:

1. Employers conveyed their satisfaction with the technical and communication skills of our students.


PRINCIPAL
AALIM MUHAMMED SALEGH
COLLEGE OF ENGINEERING
AVADI - IAF, MUTHAPUDUPET
CHENNAI 600 055





AALIM MUHAMMED SALEGH COLLEGE OF ENGINEERING



Approved by All India Council for Technical Education, New Delhi
Affiliated to Anna University, Chennai

NAAC Accredited Institution & NBA Accredited Courses (Mech. Engg., ECE, CSE, IT)
"Nizara Educational Campus" Muthapudupet, Avadi-IAF, Chennai - 55.

ANALYSIS REPORT (2020 - 2021)

ANALYSIS OF PROGRAMME FEEDBACK BY STUDENTS

After reviewing student feedback for the academic year 2020-2021, several positive points were noted:

1. Students reported a high degree of satisfaction with the content and depth of the program syllabus.
2. The majority of students expressed contentment with the career orientation programs integrated into the syllabus.
3. The syllabus was viewed as engaging and well-organized, especially in terms of class hour distribution.
4. Students valued the skill-oriented teaching methods employed by the institute and the extensive learning resources available in the library.

ANALYSIS OF PROGRAMME FEEDBACK BY ALUMNI

After reviewing parents' feedback for the academic year 2020-2021, the following positive points were noted:


1. The majority of students reported being satisfied with the resources offered by the institution and teaching process in the institution.
2. Most students appreciate the focus given to both curricular and extracurricular activities.

ANALYSIS OF PROGRAMME FEEDBACK BY TEACHERS

After reviewing teachers' feedback for the academic year 2020-2021, several key points were noted:

1. Most teachers affirmed that the program structure, along with the available infrastructure and teaching aids at the institute, is suitable.
2. Likewise, many teachers expressed confidence that updating the course structure with current skills prepares students for future job placements.

The above insights highlight the teachers' positive perceptions of the program's structure and the institution's resources, emphasizing a supportive environment for both students and educators.


PRINCIPAL
AALIM MUHAMMED SALEGH
COLLEGE OF ENGINEERING
AVADI - IAF, MUTHAPUDUPET
CHENNAI 600 055





AALIM MUHAMMED SALEGH COLLEGE OF ENGINEERING



Approved by All India Council for Technical Education, New Delhi
Affiliated to Anna University, Chennai

NAAC Accredited Institution & NBA Accredited Courses (Mech. Engg., ECE, CSE, IT)
"Nizara Educational Campus" Muthapudupet, Avadi-IAF, Chennai - 55.

ANALYSIS REPORT (2020 - 2021)

ANALYSIS OF PROGRAMME FEEDBACK BY PARENTS

After analysing parents' feedback for the academic year 2020-2021, several key points were noted:

1. The majority of parents were very pleased with the quality of instruction and the evaluation pattern.
2. Most of the parents indicated their satisfaction with the facilities provided by the institution.

ANALYSIS OF PROGRAMME FEEDBACK BY EMPLOYERS

After reviewing employer feedback for the academic year 2020-2021, the below point was noted:

1. Most of the Employers conveyed their satisfaction with the skillset of our students.


PRINCIPAL
AALIM MUHAMMED SALEGH
COLLEGE OF ENGINEERING
AVADI - IAF, MUTHAPUDUPET
CHENNAI 600 055





AALIM MUHAMMED SALEGH COLLEGE OF ENGINEERING



Approved by All India Council for Technical Education, New Delhi
Affiliated to Anna University, Chennai
NAAC Accredited Institution & NBA Accredited Courses (Mech. Engg., ECE, CSE, IT)
"Nizara Educational Campus" Muthapudupet, Avadi-IAF, Chennai - 55.

ANALYSIS REPORT (2021 - 2022)

ANALYSIS OF PROGRAMME FEEDBACK BY STUDENTS

After reviewing student feedback for the academic year 2021-2022, several positive points were noted:

1. Students conveyed a strong sense of satisfaction with the content and depth of the program syllabus.
2. A significant number of students expressed approval of the career orientation programs included in the syllabus.
3. The syllabus was regarded as engaging and well-organized, especially concerning the allocation of class hours.
4. Students valued the skill-based teaching methods implemented by the institute and the extensive array of learning resources available in the library.

ANALYSIS OF PROGRAMME FEEDBACK BY ALUMNI

After reviewing parents' feedback for the academic year 2021-2022, the following positive points were noted:

1. Most students indicated that they are satisfied with the resources available at the institution.
2. A large number of students value the attention given to curricular and extracurricular activities.

ANALYSIS OF PROGRAMME FEEDBACK BY TEACHERS

After reviewing teachers' feedback for the academic year 2021-2022, several key points were noted:

1. Teachers confirmed that the infrastructure and teaching aid in the institute is appropriate for the program structure.
2. Similarly, many teachers expressed confidence that updating the course structure with the latest skills prepares students for future job placements.

The above points indicate the teachers' positive views on the program's structure and the institution's resources by highlighting a supportive environment for both students and educators.


PRINCIPAL
AALIM MUHAMMED SALEGH
COLLEGE OF ENGINEERING
AVADI - IAF, MUTHAPUDUPE
CHENNAI 600 055





AALIM MUHAMMED SALEGH COLLEGE OF ENGINEERING



Approved by All India Council for Technical Education, New Delhi
Affiliated to Anna University, Chennai

NAAC Accredited Institution & NBA Accredited Courses (Mech. Engg., ECE, CSE, IT)
"Nizara Educational Campus" Muthapudupet, Avadi-IAF, Chennai - 55.

ANALYSIS REPORT (2021 - 2022)

ANALYSIS OF PROGRAMME FEEDBACK BY PARENTS

After analysing parents' feedback for the academic year 2021-2022, several key points were noted:

1. Most parents were very satisfied with the quality of instruction and the assessment methods.
2. Many parents expressed their approval of the facilities offered by the institution.

ANALYSIS OF PROGRAMME FEEDBACK BY EMPLOYERS

After reviewing employer feedback for the academic year 2021-2022, the below point was noted:

1. Employers expressed their approval of our students' technical and communication skills.

**PRINCIPAL
AALIM MUHAMMED SALEGH
COLLEGE OF ENGINEERING
AVADI - IAF, MUTHAPUDUPE
CHENNAI 600 055**





AALIM MUHAMMED SALEGH COLLEGE OF ENGINEERING



Approved by All India Council for Technical Education, New Delhi
Affiliated to Anna University, Chennai
NAAC Accredited Institution & NBA Accredited Courses (Mech. Engg., ECE, CSE, IT)
"Nizara Educational Campus" Muthapudupet, Avadi-IAF, Chennai - 55.

ANALYSIS REPORT (2022 - 2023)

ANALYSIS OF PROGRAMME FEEDBACK BY STUDENTS

After reviewing student feedback for the academic year 2022-2023, several positive points were noted:

1. Students expressed strong satisfaction with the content and depth of the program syllabus.
2. Many students showed approval for the career orientation programs incorporated into the syllabus.
3. The syllabus was viewed as engaging and effectively structured, particularly in terms of class hour distribution.
4. Students appreciated the skill-oriented teaching methods adopted by the institute and the wide range of learning resources accessible in the library.

ANALYSIS OF PROGRAMME FEEDBACK BY ALUMNI

After reviewing parents' feedback for the academic year 2022-2023, the following positive points were noted:

1. Most students indicated that they are satisfied with the resources available at the institution.
2. A large number of students value the attention given to various activities at the institution.

ANALYSIS OF PROGRAMME FEEDBACK BY TEACHERS

After reviewing teachers' feedback for the academic year 2022-2023, several key points were noted:

1. Teachers affirmed that the infrastructure and teaching aids at the institute are suitable for the program structure.
2. Many teachers expressed confidence that updating the course structure with current skills equips students for future job placements.

These points reflect the teachers' positive perceptions of the program's structure and the institution's resources, emphasizing a supportive environment for both students and educators.


PRINCIPAL
AALIM MUHAMMED SALEGH
COLLEGE OF ENGINEERING
AVADI - IAF, MUTHAPUDUPET
CHENNAI 600 055





AALIM MUHAMMED SALEGH COLLEGE OF ENGINEERING



Approved by All India Council for Technical Education, New Delhi
Affiliated to Anna University, Chennai

NAAC Accredited Institution & NBA Accredited Courses (Mech. Engg., ECE, CSE, IT)
"Nizara Educational Campus" Muthapudupet, Avadi-IAF, Chennai - 55.

ANALYSIS REPORT (2022 - 2023)

ANALYSIS OF PROGRAMME FEEDBACK BY PARENTS

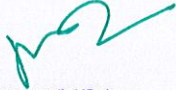
After analysing parents' feedback for the academic year 2022-2023, several key points were noted:

1. The majority of parents expressed strong satisfaction with the quality of teaching and the exam structure.
2. About 90% of parents indicated that they were happy with the facilities provided by the institution.

ANALYSIS OF PROGRAMME FEEDBACK BY EMPLOYERS

After reviewing employer feedback for the academic year 2022-2023, the below point was noted:

1. Employers expressed their satisfaction of our students' skillset and behavior in working environment.


PRINCIPAL
AALIM MUHAMMED SALEGH
COLLEGE OF ENGINEERING
AVADI - IAF, MUTHAPUDUPET
CHENNAI 600 055

